

Bld No. Carpark Grd Ref. Division / Faculty / School / Section

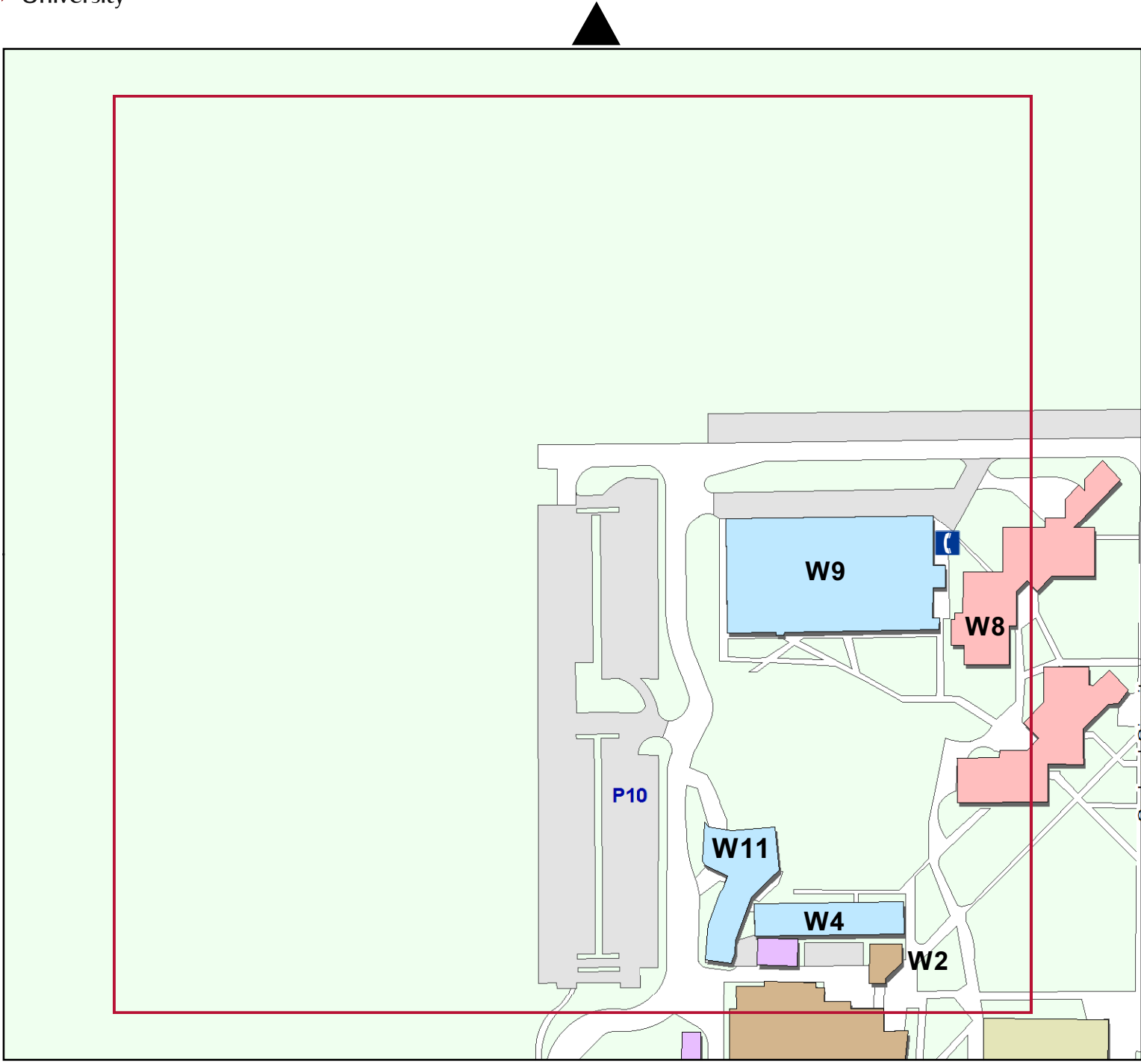
C1	P7	B2	Division of Student Administration
C2	P7	B2	School of Business
C2	P7	B2	School of Computing and Mathematics - Mansfield
C2	P7	B2	Professional Development Unit (PDU) - Mansfield
C2	P7	B2	Faculty of Business - Mansfield
C2	P7	B2	CSU Training - Mansfield
C2	P7	B2	School of Accounting and Finance- Mansfield
C2	P7	B2	School of Management and Marketing - Mansfield
C2	P7	B2	Office of Academic Governance- Mansfield
C2	P7	B2	Division of Learning and Teaching Services - Mansfield
C2	P7	B2	School of International and Professional Relations - Mansfield
C2	P7	B2	School of International and Business Partnerships - Mansfield
C2	P7	B2	Institute for Land, Water and Society - Mansfield
C3	P7	B2	Learning Commons
C3	P7	B2	Student Central
C3	P7	B2	Truskett Library
C3	P7	B2	Division of Library Services
C4	P7	B2	Division of Student Services
C5	P7	B3	Bookshop - Uni Co-op - Mason
C5	P7	B3	Division of Student Services - Mason
C5	P7	B3	Dining Hall - Mason
C6	P7	B3	School of Social Sciences and Liberal Studies - McDonoughs
C6	P7	B3	School of Humanities and Social Sciences - McDonoughs
C6	P7	B3	Faculty of Business - McDonoughs
C6	P7	B3	School of Psychology - McDonoughs
C6	P7	B3	Institute for Land, Water and Society - McDonoughs
C6	P7	B3	Australian Graduate School of Policing - McDonoughs
C6	P7	B3	Division of Learning and Teaching Services - McDonoughs
C7	P1	B3	School of Communication and Creative Industries
C7	P1	B3	Faculty of Arts
C7	P1	B3	Radio Station 2MCE-FM
C8	P13	B3	Curriculum Centre
E1	P3	B3	Physical Education Centre - CD Blake Auditorium
E1	P3	B3	Western Region Academy of Sport - CD Blake Auditorium
E1	P3	B3	Division of Facilities Management - CD Blake Auditorium
E12	P3	C3	Change Rooms Amenities Showers & Toilets
E17	P20	B4	Office of Vice Chancellor - The Grange
E17	P20	B4	Office of International Relations - The Grange
E17	P20	B4	Office of Corporate Affairs - The Grange
E17	P20	B4	Division of Human Resources - The Grange
E17	P20	B4	Office of Corporate Affairs - The Grange
E17	P20	B4	Advancement Unit (Alumni Office) - The Grange
E17	P20	B4	Office of Planning and Audit - The Grange
E18	P20	C4	Beyond Medical Education

Bld No. Carpark Grd Ref. Division / Faculty / School / Section

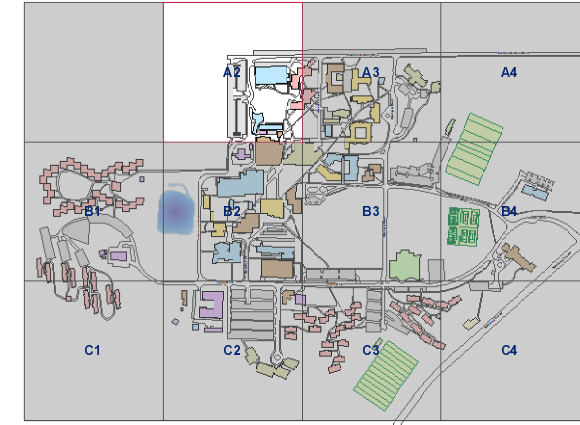
E19	P19	B4	Dental Clinic
N1	P14	A3	Bathurst Early Childhood Intervention Service- Allen House
N1	P14	A3	Division of Marketing - Allen House
N1	P14	A3	School of Teacher Education - Allen House
N1	P14	A3	School of Human Movement Studies - Allen House
N1	P14	A3	Office of International Relations - Allen House
N2	P13	A3	School of Communication and Creative Industries/Radio Station 2MCE - Broadcast studios
N3	P13	A3	Radio Station 2MCE-FM - Ponton Theatre
N4	P14	A3	School of Teacher Education - Heffron
N4	P14	A3	Faculty of Business - Heffron
N4	P14	A3	Faculty of Education - Heffron
N5	P13	A3	School of Communication and Creative Industries - Cunningham House
N5	P13	A3	Division of Learning and Teaching Services - Cunningham House
N5	P13	A3	Faculty of Arts - Cunningham House
N6	P13	A3	Western Research Institute
N6	P13	A3	School of Teacher Education
N7	P13	A3	Kajulu Communications
N8	P13	A3	School of Biomedical Sciences
N9	P13	A3	Division of Marketing - The Founders Cottage
N10	P14	A3	Science Laboratories
N11	P14	A3	Bush Toilet - Closed
N13	P14	A3	Mitchell Childcare Centre
N14	P1	A4	Change Rooms Amenities Showers & Toilets
N15	P14	A3	Bathurst Early Childhood Intervention Service
N16	P1	B3	Division of Marketing - info csu
N17	P14	A3	Connected Learning Space
R01 - R10	P9	B1	John Oxley Village
R11	P9	B1	John Oxley Village - Common room/Laundry
R12 - R17	P3	C3	The Diggings
R18 - R19	P4	C3	The Diggings
R20	P5	C2	Migate Room/Plant room
R21	P4	C3	The Diggings
R41 - R42	P5	C2	The Diggings
R43	P4	C3	The Diggings
R44 - R48	P3	C3	The Diggings
R49 - R51	P3	C3	Windradyne Student Residential Cottages - Laundry
R52 - R53	P20	C4	Windradyne Student Residential Cottages
R54 - R60	P3	C3	Windradyne Student Residential Cottages
R70 - R74	P9	B1	Dormitories
R75 - R79	P9	C1	Dormitories
S1	P7	B2	Division of Information Technology - Dobbin
S1	P7	B2	Office of Academic Governance - Dobbin
S1	P7	B2	Division of Learning and Teaching Services - Dobbin
S1	P7	B2	Project Service Centre - Dobbin

Bld No. Carpark Grd Ref. Division / Faculty / School / Section

S1	P7	B2	Centre for Research in Complex Systems
S1	P7	B2	Division of Information Technology
S10	P9	B1	Division of Facilities Management
S11	P8	C2	Division of Facilities Management
S12	P5	C2	Division of Facilities Management
S12	P5	C2	Division of Finance
S13	P8	C2	Flammable Liquids Store
S14	P7	B2	School of Nursing, Midwifery and Indigenous Health - Sheila Swain
S14	P7	B2	Faculty of Health Studies - Sheila Swain
S15	P5	B2	Science Laboratories
S15	P5	B2	School of Computing and Mathematics
S15	P5	B2	School of Accounting and Finance
S15	P5	B2	School of Information Technology
S15	P5	B2	Indigenous Student Services
S15	P5	B2	Faculty of Business
S15	P5	B2	School of Biomedical Sciences
S16	P5	B2	Division of Learning and Teaching Services
S16	P5	B2	Examinations Office
S17	P5	C2	Centre for Professional Development (CPD)
S17	P5	C2	Division of Student Services
S18	P5	C2	Security Office / Mni Mart / Postoffice
S18	P5	C2	Division of Facilities Management
S18	P5	C2	Division of Finance
S18	P5	C2	Division of Student Services
S19	P5	C2	Centre for Professional Development (CPD)
S2	P7	B2	Religious Centre
S21	P7	B2	Exercise and Sports Science Laboratories
S21	P7	B2	Laboratory Services Unit
S21	P7	B2	School of Human Movement Studies
S21	P7	B2	School of Biomedical Sciences
S22	P8	C2	Science Store
S4	P7	B2	Teaching space
S7	P7	B2	School of Teacher Education
S8	P7	B2	School of Teacher Education
S9	P10	B2	Boiler House
W2	P10	A2	Division of Student Services
W4	P10	A2	Science Laboratories
W7	P13	A3	Heath House
W8	P12	A2	Cottrell House
W9	P12	A2	Mitchell Services Limited
W9	P12	A2	School of Communication and Creative Industries.
W9	P12	A2	Class rooms
W9	P12	A2	Division of Information Technology
W11	P10	A2	Inter-Regional Clinical Simulation Centre



A2

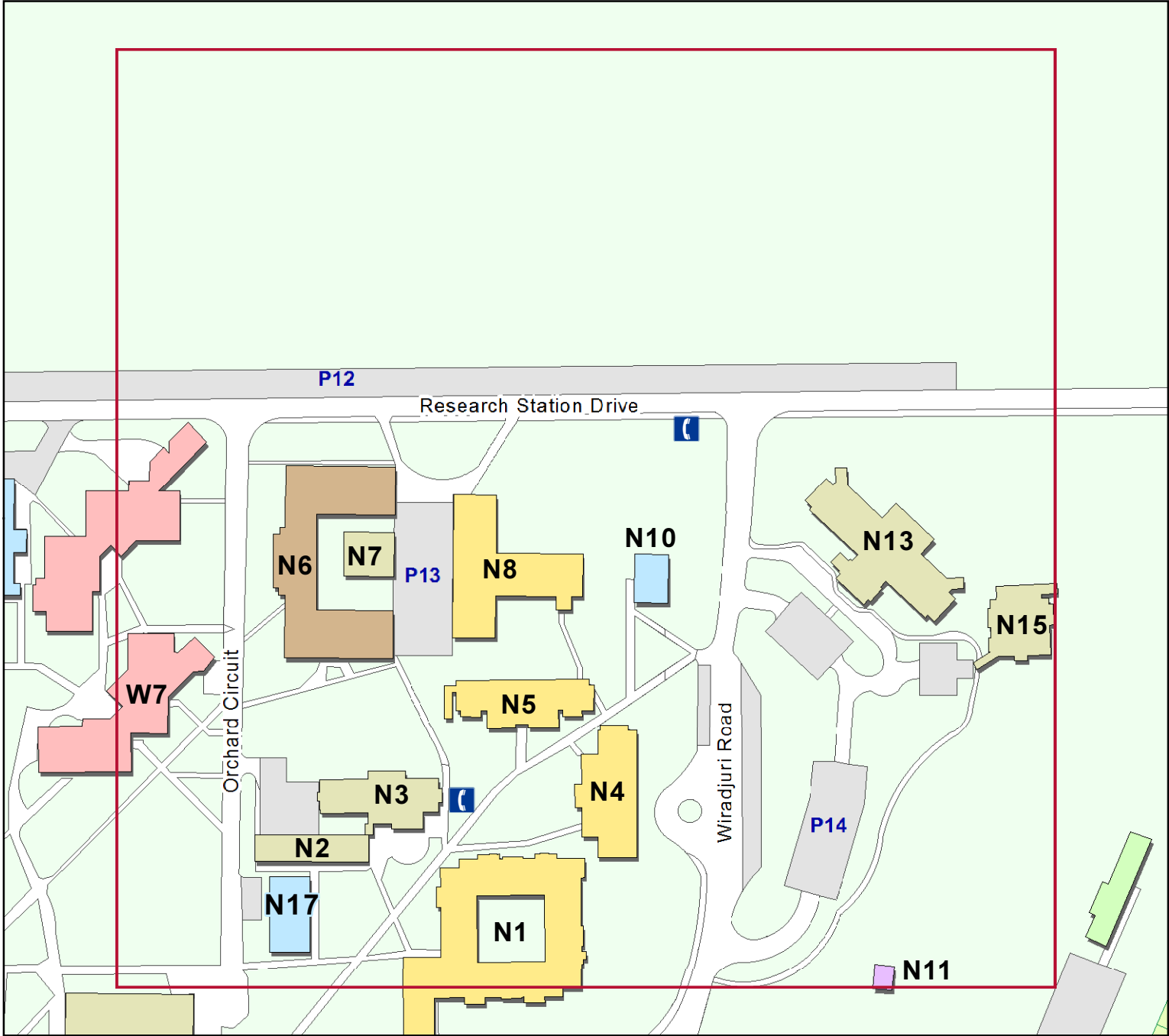
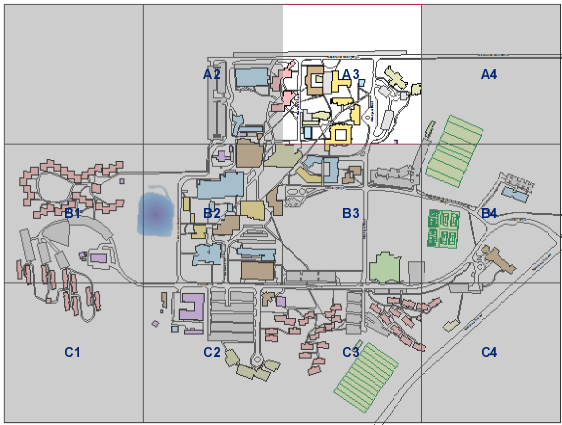


- Building Function**
- Teaching, Learning and Research
 - Office - Academic
 - Office - Administration
 - Residential
 - Retail
 - Recreation
 - Ancillary
 - Other

A3

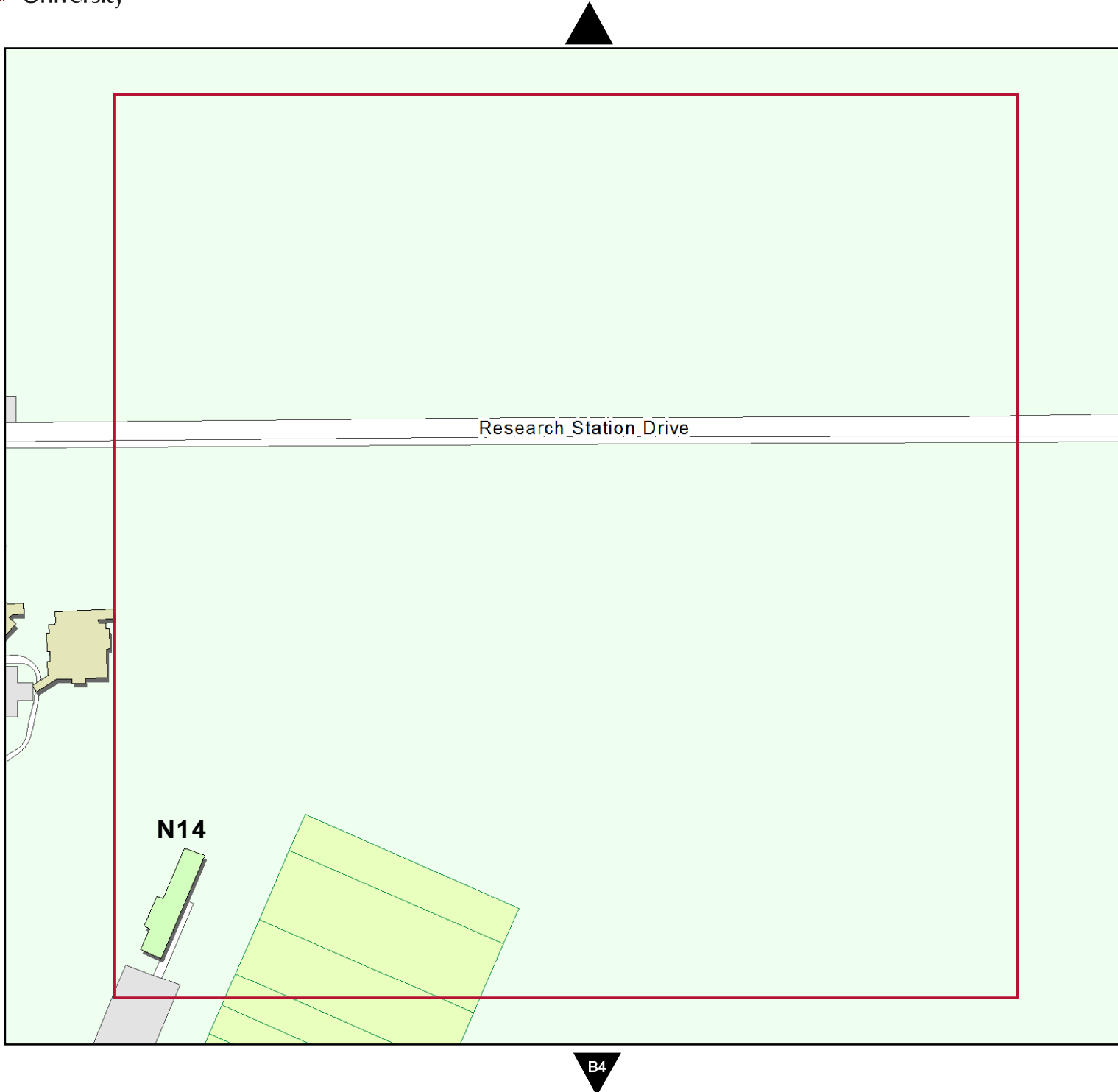
B2

A3

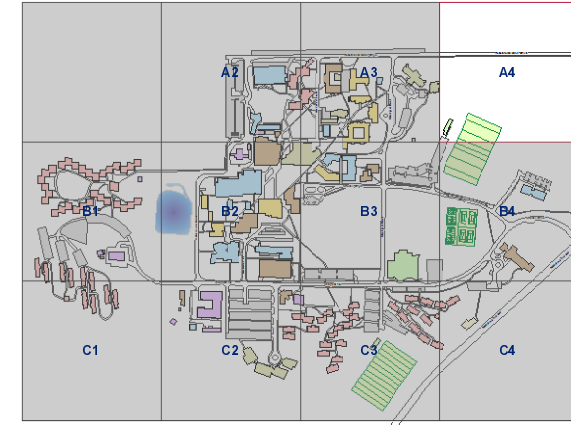


Building Function

- Teaching, Learning and Research
- Office - Academic
- Office - Administration
- Residential
- Retail
- Recreation
- Ancillary
- Other



A4



Building Function

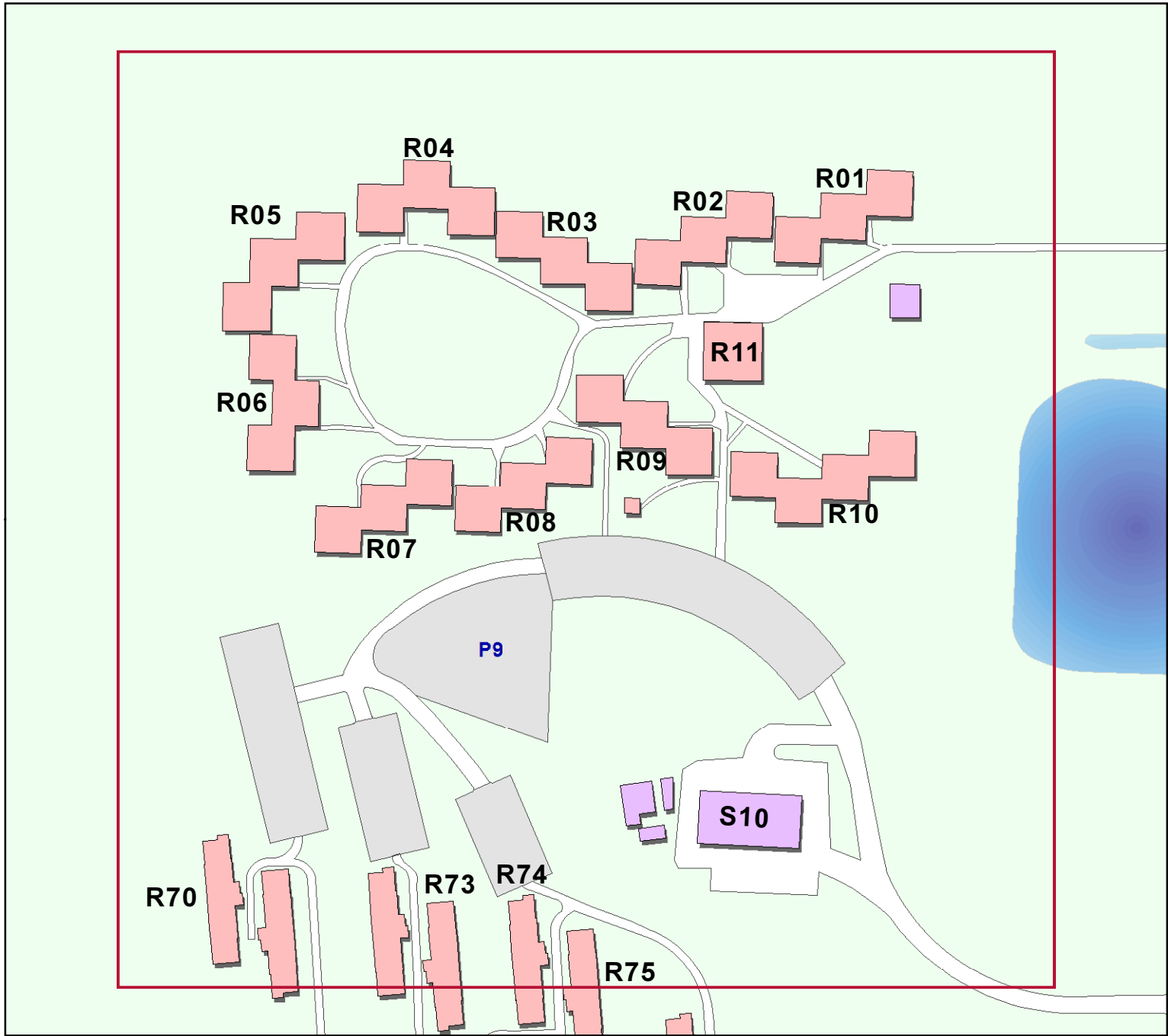
- Teaching, Learning and Research
- Office - Academic
- Office - Administration
- Residential
- Retail
- Recreation
- Ancillary
- Other

A3

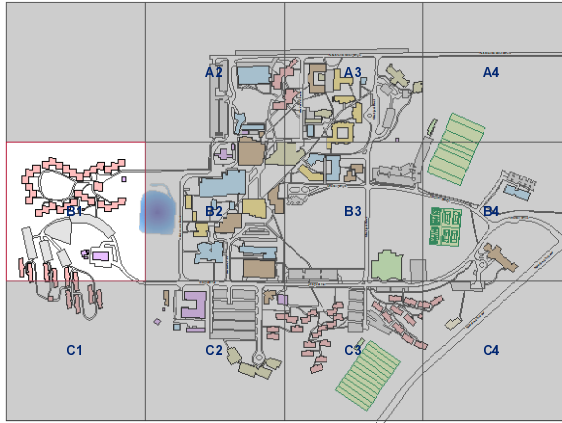
B4

N14

Research Station Drive



B1

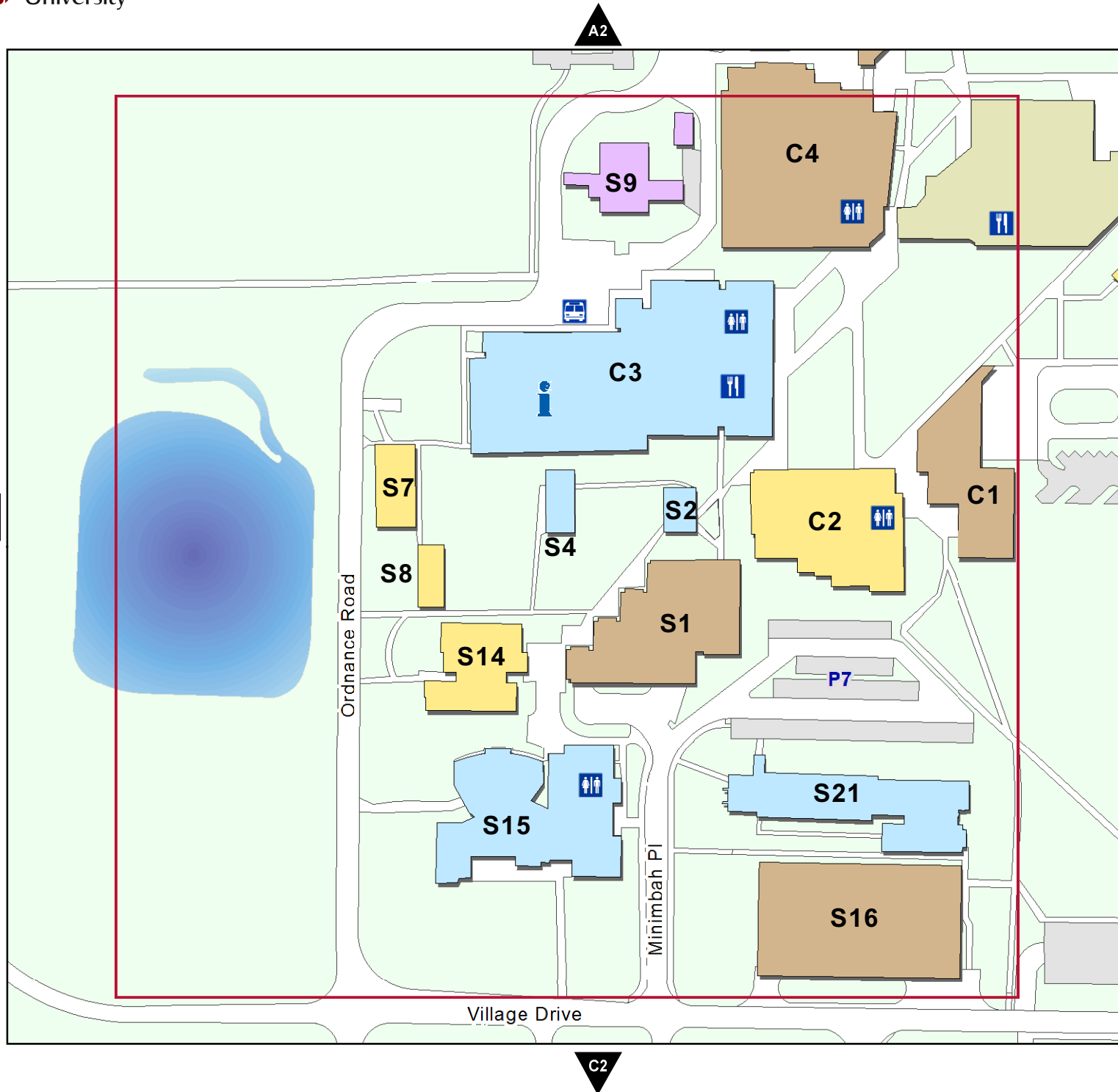


Building Function

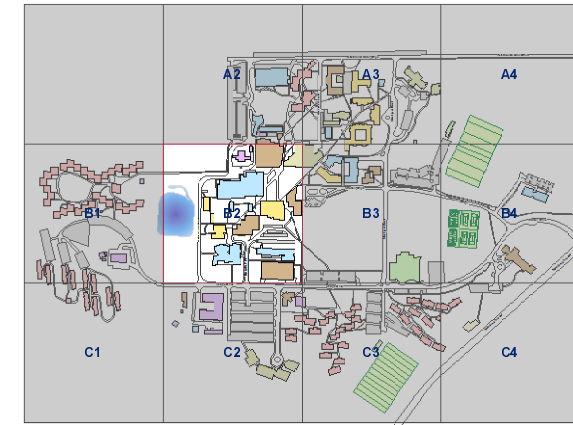
- Teaching, Learning and Research
- Office - Academic
- Office - Administration
- Residential
- Retail
- Recreation
- Ancillary
- Other

B2

C1

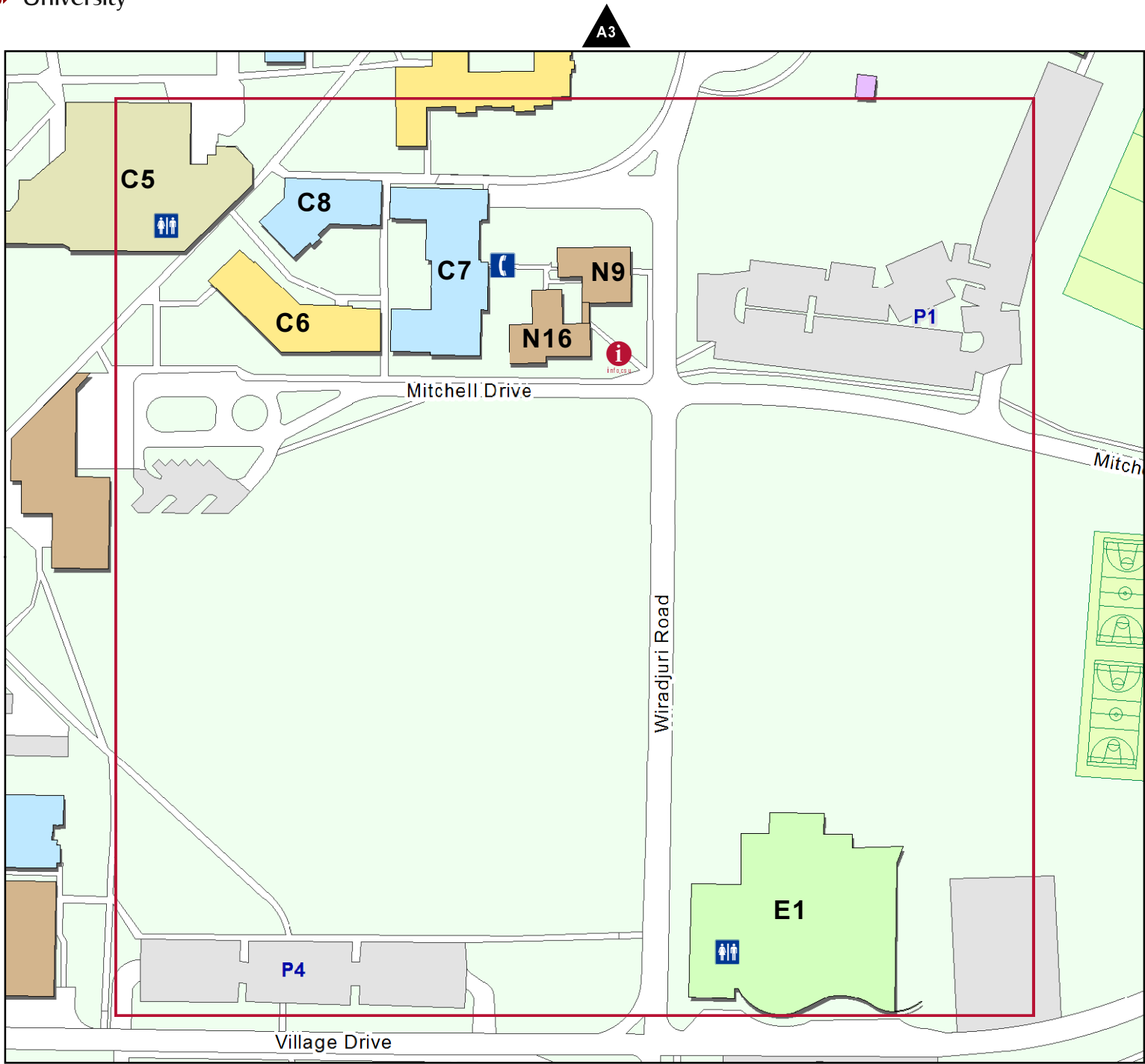


B2

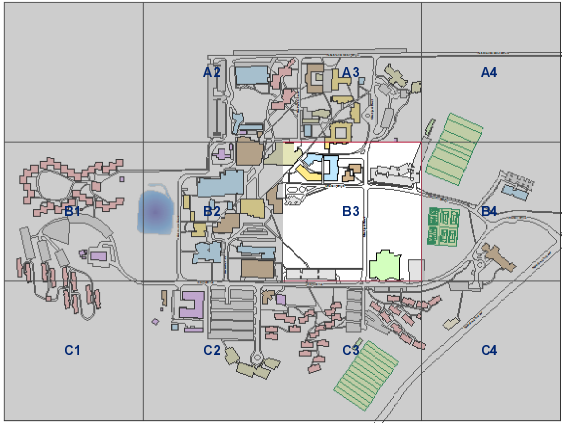


Building Function

- Teaching, Learning and Research
- Office - Academic
- Office - Administration
- Residential
- Retail
- Recreation
- Ancillary
- Other



B3



Building Function

- Teaching, Learning and Research
- Office - Academic
- Office - Administration
- Residential
- Retail
- Recreation
- Ancillary
- Other

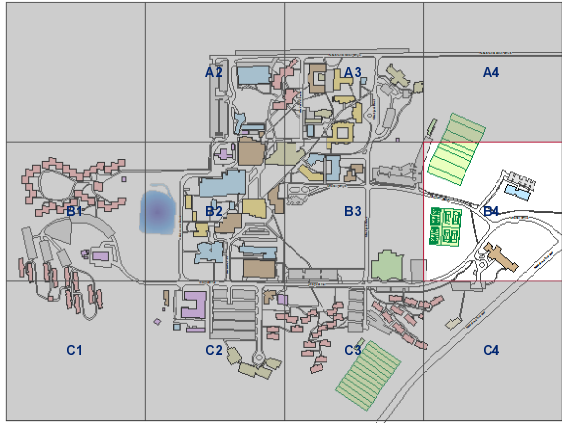
A4



B3

C4

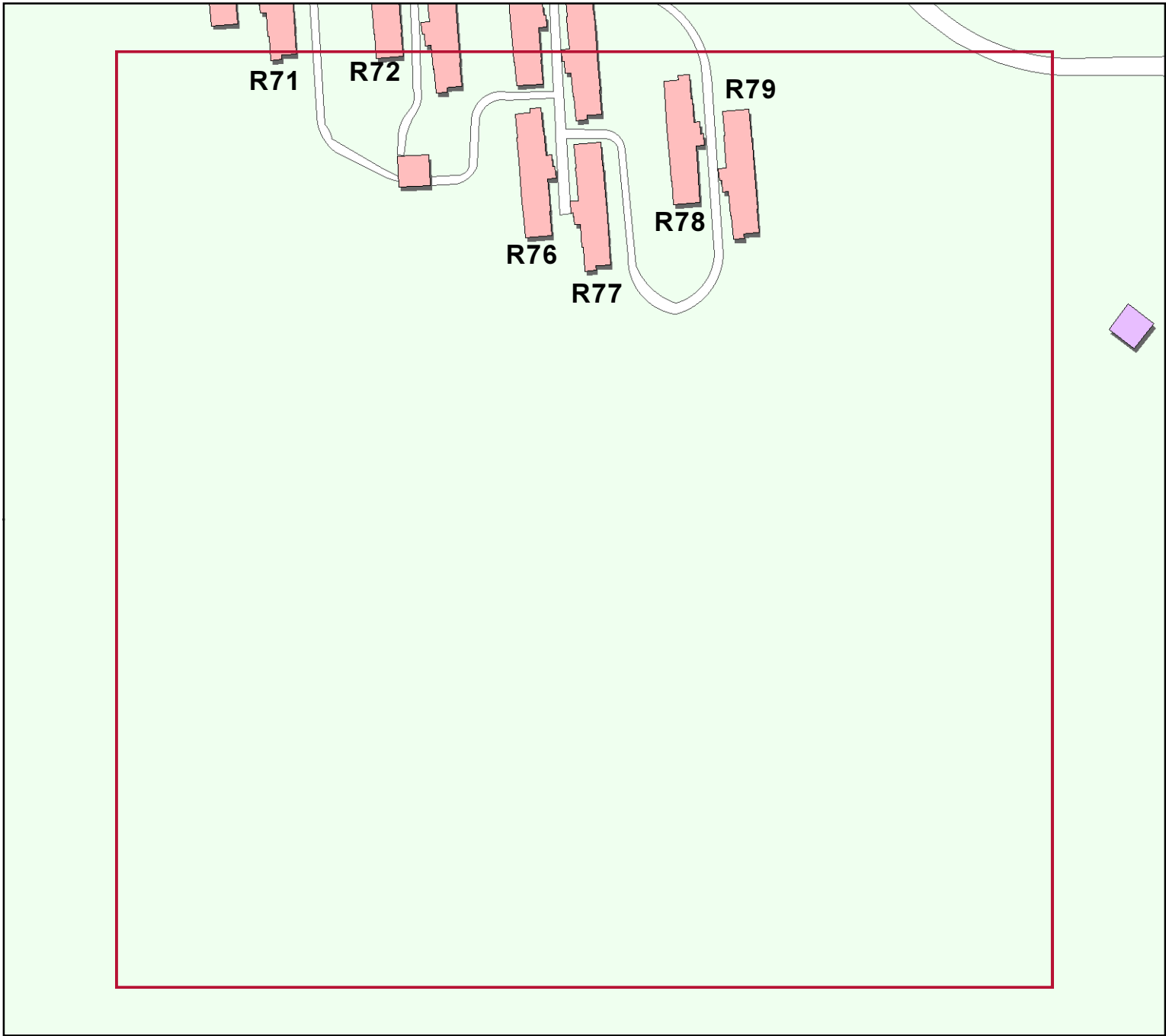
B4



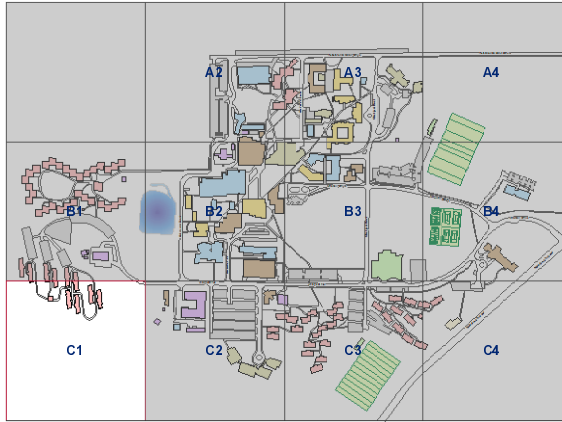
Building Function

- Teaching, Learning and Research
- Office - Academic
- Office - Administration
- Residential
- Retail
- Recreation
- Ancillary
- Other

B1



C1

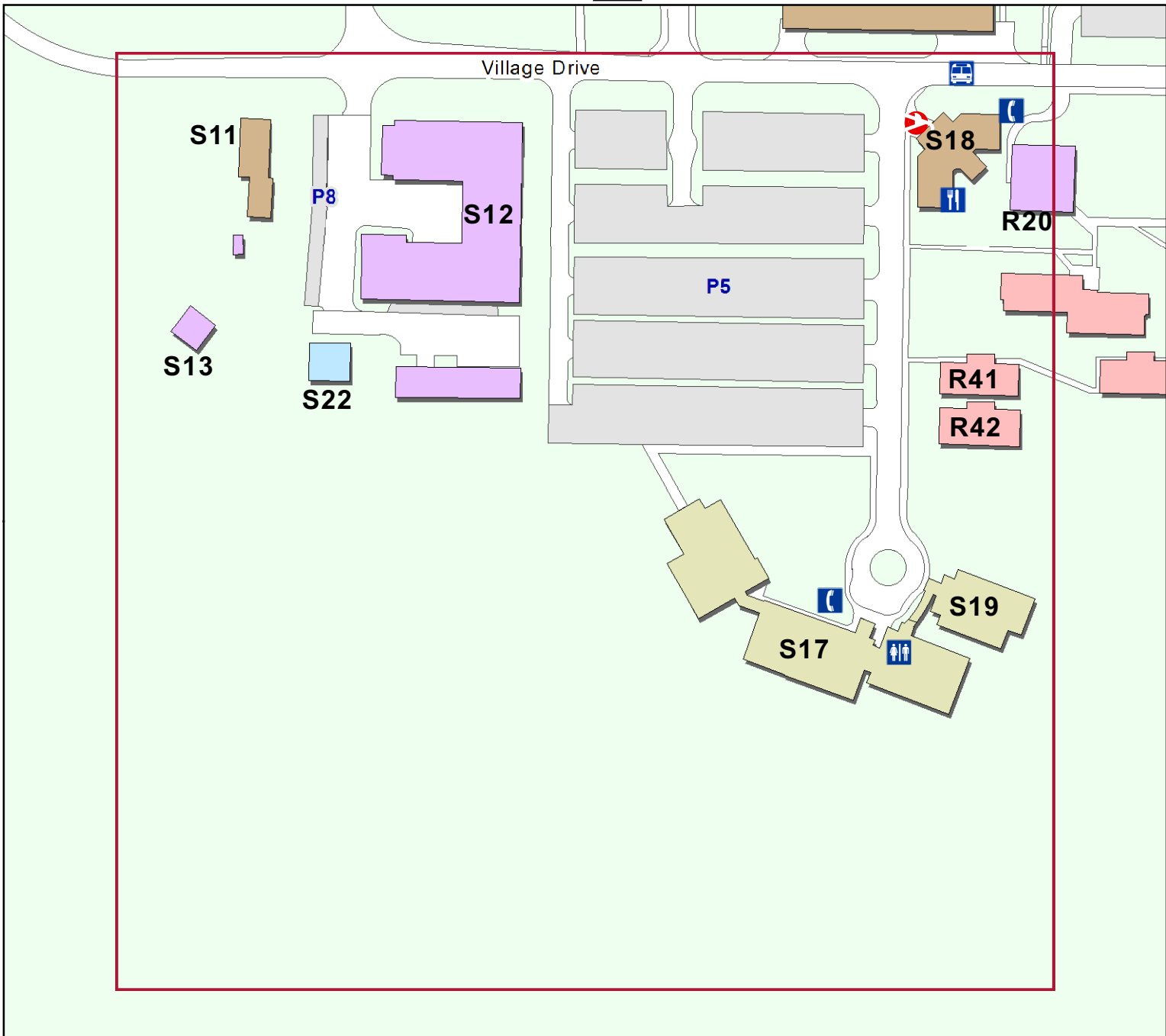


Building Function

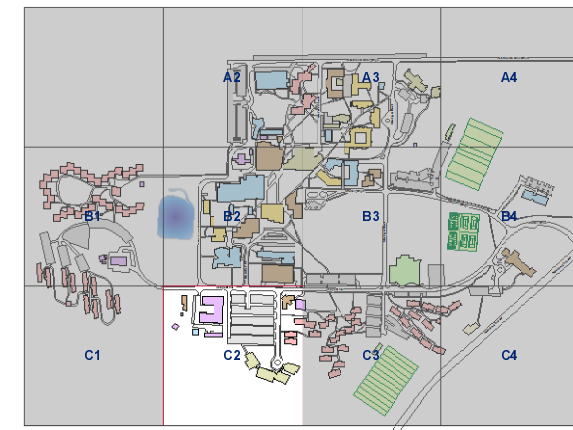
- Teaching, Learning and Research
- Office - Academic
- Office - Administration
- Residential
- Retail
- Recreation
- Ancillary
- Other

C2

B2



C2



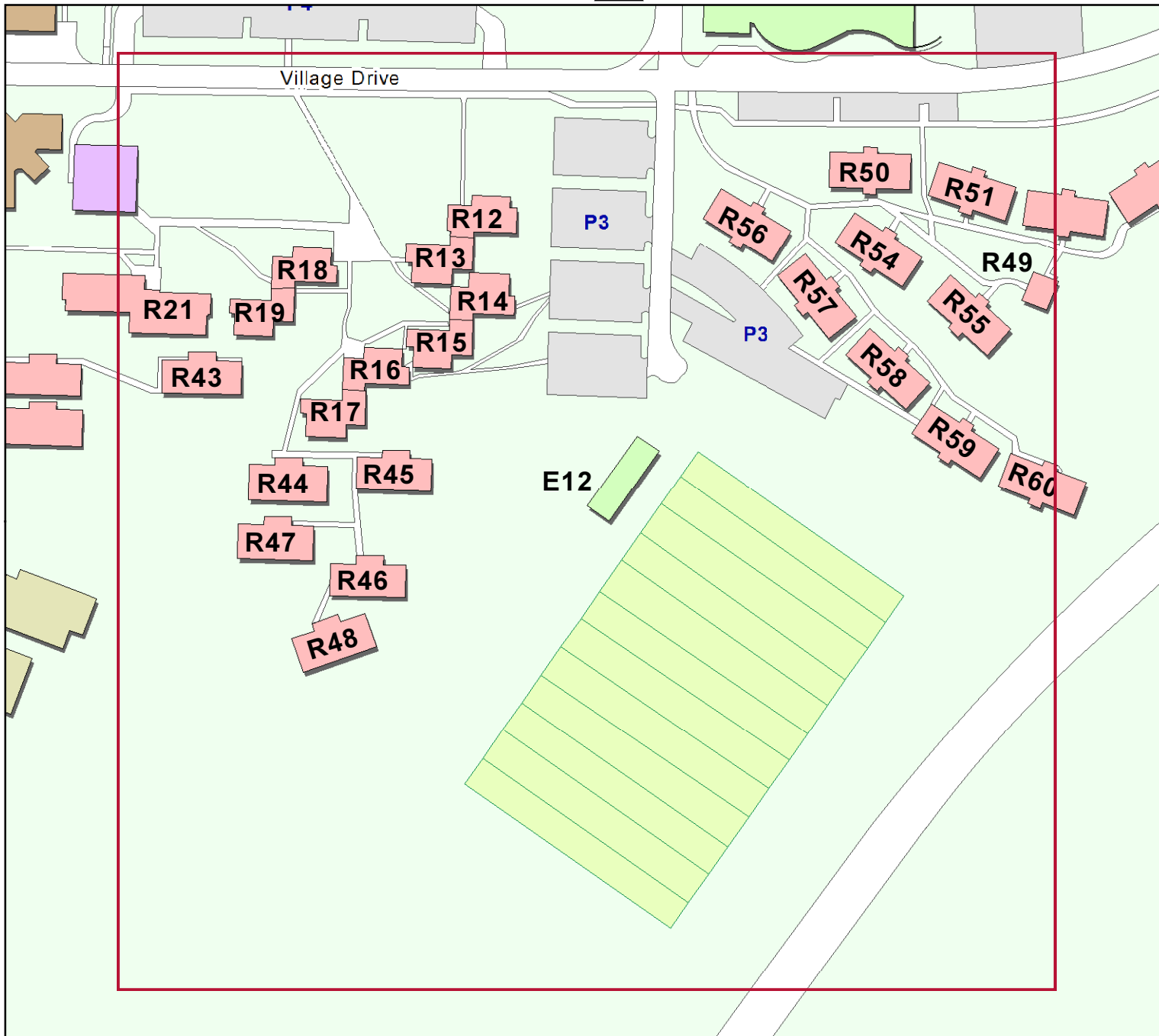
Building Function

- Teaching, Learning and Research
- Office - Academic
- Office - Administration
- Residential
- Retail
- Recreation
- Ancillary
- Other

C1

C3

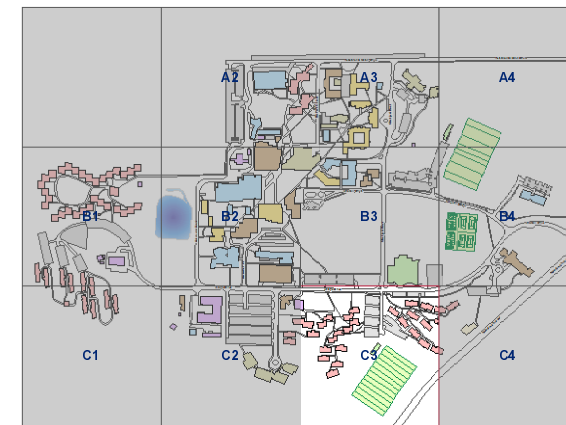
B3



C2

C4

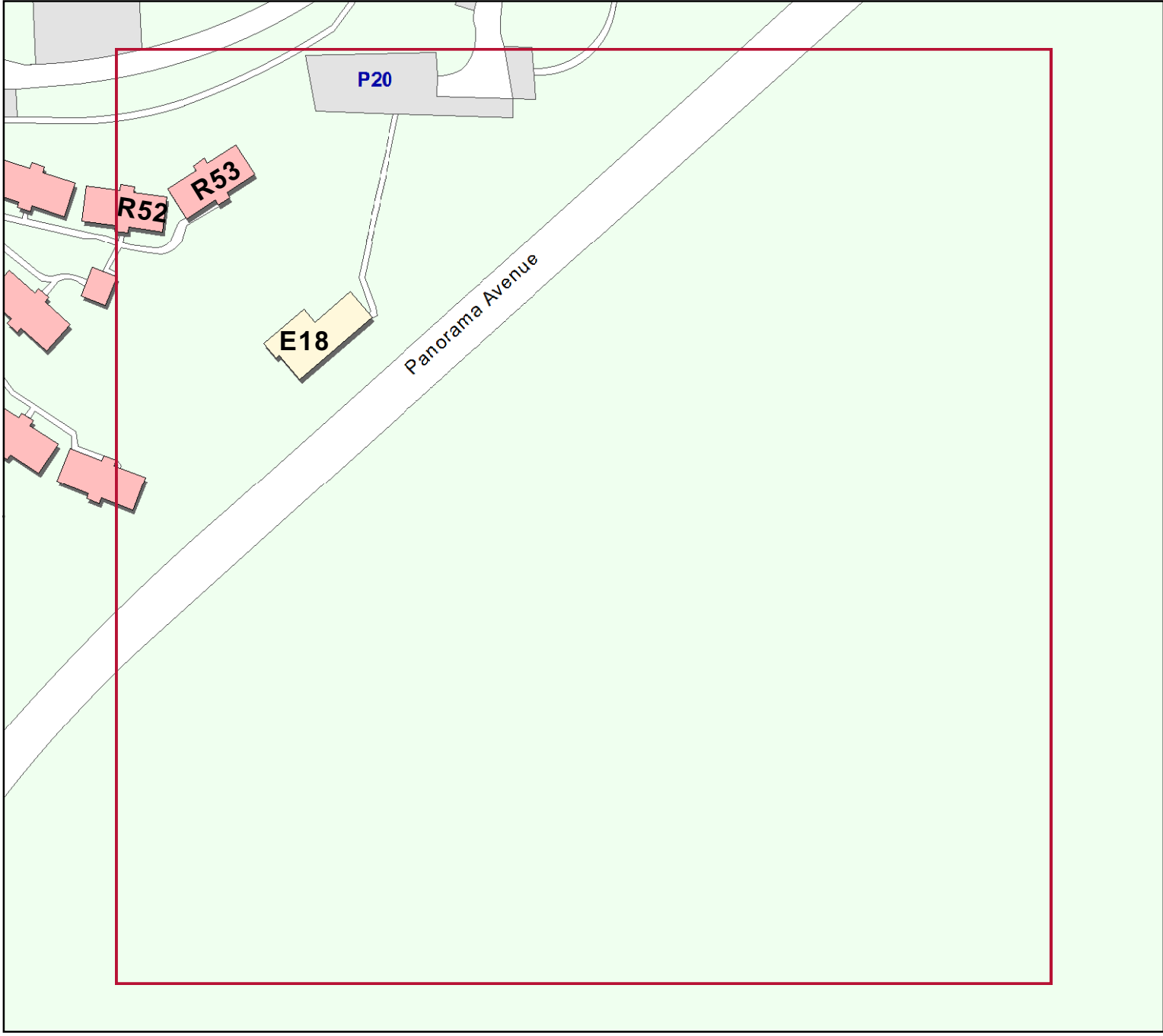
C3



Building Function

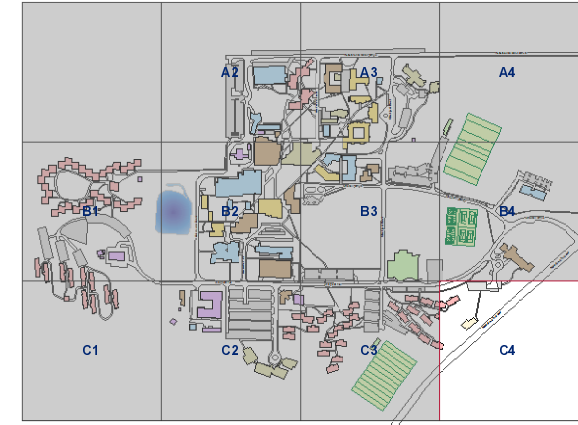
- Teaching, Learning and Research
- Office - Academic
- Office - Administration
- Residential
- Retail
- Recreation
- Ancillary
- Other

B4



C3

C4



Building Function

- Teaching, Learning and Research
- Office - Academic
- Office - Administration
- Residential
- Retail
- Recreation
- Ancillary
- Other