

RESEARCH OFFICE BULLETIN

Bringing together research news from around CSU

Edition 46 – September 2017

Welcome from the Director, Research

I hope many of you were able to attend our recent roadshows. The interaction so far has been excellent and it has been a great platform for the exchange of information between the Research Office and our Researchers. We will certainly be looking hard at the many ideas and suggestions we received and seeing how we can implement them to improve our research support services. I will be visiting Dubbo, Port Macquarie and Sydney in the coming weeks and look forward to the interactions there also.

We will also be conducting an extra videoconference session for anyone who missed the initial sessions and it will be recorded and uploaded onto our website in the near future.

We are moving rapidly ahead with preparation for ERA. All eligible researchers will shortly be receiving emails detailing your recorded research outputs. Please take the time to check your outputs, add anything missing and ensure the FoR assignments are correct. This is vitally important for our ERA submission. This can all be done through our new repository (CRO) which provides a much better interface to conduct these tasks so this is not so onerous.

You may also have received an invitation from your Associate Dean of Research (ADR) or Research Centre Director to provide support roles either as “FoR Champions” or as members of the Academic Delivery Groups in the ERA and EI submissions. We have received a number of submissions, but if you wish to be considered please contact your ADR or Research Centre Director expressing your interest and they can pass on that information to me.

Below are details of the CSU ERA/EI 2018 Governance structure.

CSU ERA/EI 2018 Governance structure

Excellence in Research for Australia (ERA) is the Australian Research Council (ARC) led evaluation of research quality.

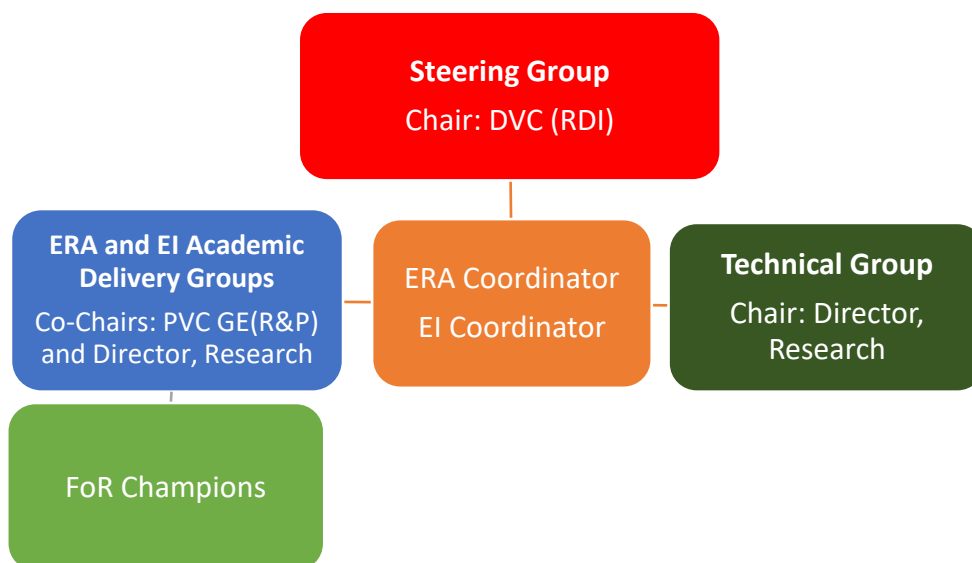
Welcome	1
New HDR Policy	3
Research PD, what's your view? ...	4
'Our CSU RAP' Working Groups....	5
Research outputs information for ERA	6
5RP Competition.....	6
The NVivo Guide.....	7
Your ORCID profile:	7
Library Research Support Page....	8
Upcoming Library Training	8
ALLaN Bootcamps.....	8
QCU.....	9
Writing a Successful Grant App ...	10
Funding Opportunities.....	10
Women in STEM.....	11
SIEF.....	11
NSW Health Early-Mid Career Fellowships	12
2018 Science and Innovation Awards.....	13
AgriFutures Australia.....	13
More Grants Open:	14
The ARC Harry Windsor Research Grants Scheme	15
What's New on the PDCalendar ..	16
Contact	17

Engagement and Impact Assessment (EI) is the ARC led national engagement and impact assessment which will examine how universities are translating their research into economic, social and other benefits.

As ERA and EI will operate simultaneously, the structure for governance and delivery of both assessments will be shared. Three groups within the CSU model will be responsible for enabling delivery of ERA and EI assessments in 2018 (Figure 1).

- The **Steering Group** is responsible for the overarching strategic direction of the ERA and EI processes and the timely delivery of the final submissions. This Group guides and informs the work of the Academic Delivery Group and the Technical Group.
- Two **Academic Delivery Groups** (ERA and EI) are tasked with assuring the completeness, quality and integrity of submission content and assisting with optimisation of ERA and EI submissions respectively to best represent CSU’s research activity.
- A single **Technical Group** is responsible for technical and data aspects of both the ERA and EI submissions: assuring compliance with reporting requirements, as well as data collection, systems preparation, testing and uploading of various submission stages.
- In support of these Groups, an **ERA Coordinator** and an **EI Coordinator** based within the Research Office will be responsible for ensuring coordination and communication between groups and communicating direction from the Deputy Vice-Chancellor (Research, Development & Industry) (DVC (RDI)), Pro-Vice Chancellor, Global Engagement (Research and Partnerships (Pro-Vice Chancellor, Global Engagement (Research and Partnerships) - PVC GE (R&P) - formerly the PVC International Education and Partnerships)) and the Director Research as appropriate.
- **FoR Champions** will provide discipline-specific knowledge and guidance representing each of the 22 Fields of Research (FoR) included in the assessments.

The structure and reporting lines of the ERA/EI 2018 Governance groups is as below;



Other issues to note;

- We have released the new HDR policy and details are included below. There are some significant changes so please take a look at the details.
- Our new Head of Professional Development, Alison Mathews, is calling for input into revision of our Professional Development Program. We have also made some changes to the QCU service charter which are detailed below.
- Please keep an eye out for our HDR scholarship round which will be announced imminently and will close end of October.
- We will also be announcing the timelines for the Intent-to-Submit process for the major ARC and NHMRC funding schemes for funding commencing 2019.

So a busy few months ahead and we look forward to continuing to work with our researchers to keep improving our research services and also support our research applications and performance.

Cheers
Gethin

New HDR Policy

The new Higher Degree by Research Policy, approved by Academic Senate in July, is now in effect. You can access the new policy [here](#) on the CSU Policy Library website.

The single policy is now accompanied by 3 schedules, which can be accessed [here](#).

This policy incorporates, and thus replaces, four old HDR policies relating to: Enrolment and Progress; Examinable Works and Examination; Examinable Works (Presentation of Printed Components); and Supervision.

Of particular interest to candidates and supervisors is:

- the removal of the requirement to submit printed and bound theses for examination and graduation – these now only need to be provided in electronic form;
- Research Doctorates and Masters by Research will now require three external examiners - previously Masters by Research degrees only had two examiners.

A list of the major changes in the policy is provided in the table below.

Reference	Notes
Throughout Policy	The terms written and non-written thesis have been removed from the policy. The single term “thesis” is now used for all HDR courses and specific details of different formats are included in Higher Degree by Research Policy -Schedule 3 Requirements for Thesis. By standardising thesis terms this removes any perception of differential worth.
Clause 43	Restrict additional subjects to probationary period only. These subjects are usually included to upskill students for their studies. It is important they are completed early in

	<p>their studies to provide those skills to underpin their research.</p> <p>Completion by probation also ensures the courses do not distract the students from their research during the later more intensive period of their HDR.</p>
Clause 52	Removed from Termination of Candidature that a candidate may be reinstated with or without conditions by the Research Committee. Termination is undertaken after extensive discussion with the Faculty. If the student has a legitimate complaint they can take this through the University appeals process.
Clause 72	Inserted new policy for clarification on how to proceed if a student wishes to submit their thesis against the wishes of their supervisory team. There was no formal procedure previously.
Clause 74	On-Site Bodies of works clause redrafted to provide clarification on the procedure.
Clause 79	Both Research Doctorates and Masters by Research will now require three external examiners. Previously Masters by Research degrees only had two examiners.
Clause 96	Clause inserted to allow the University to terminate candidature if insufficient progress is being made in respect to responding to examiners' reports.
Clauses 98c. & 100	Included a formal recognition of the role of the Examination Committee in the Examination process.
Clauses 69 & 109 & Schedule 3	Electronic submission of Examinable Thesis and Final Thesis with removal of requirement for printed and bound thesis.

Research PD, what's your view?

All CSU researchers, including HDR candidates and research support staff, have access to a range of research professional development programs. Over the next period, the new Manager of Research Professional Development, Alison Matthews, will be consulting widely with researchers on their needs for research education and training and to identify gaps in the current program.

If you would like to discuss your ideas for the professional development program at CSU for 2018 please contact Alison on 19429 or email almathews@csu.edu.au to set up a meeting.

‘Our CSU RAP’ Working Groups

The RAP Steering Group would like to call for expressions of interest from staff and students who would like to contribute to the development of ‘Our CSU RAP’ by joining one of the Working Groups.

We strongly encourage both Indigenous Australian and non-Indigenous Australian staff and students to submit an expression of interest. It is critical to its success that ‘Our CSU RAP’ is a shared journey.

The RAP Working Groups will consider one of the three main focus areas within the RAP. These focus areas are:

RAP Theme	CSU Value	Deliverables/outcomes in this area will focus on:
Relationships	Inclusive	Creating relationships that are mutually respectful and beneficial within our Communities. Being inclusive of all members of our Community and everyone’s ability to contribute to making a world worth living in. E.g.: Reconciliation week and NAIDOC week activities and engagement; Develop engagement plans to work with Communities; Promotion of the RAP
Respect	Insightful	Developing staff and students who are understanding of people and the world and can thus help create a world worth living in, believing in the value all people have to contribute. E.g.: Cultural learning activities and increasing the awareness and understanding of Aboriginal and Torres Strait Islander cultures; Acknowledgement and Welcome to Country protocols and standards for CSU; Ensure policies encourage participation in cultural celebrations/activities.
Opportunities	Inspiring	Providing opportunities that allow the development of leaders through education and employment opportunities who are inspiring and able to lead for futures generations, thus creating a world worth living in. E.g.: Increasing Aboriginal and Torres Strait Islander staff, students, and research activities; accessing Aboriginal and Torres Strait Islander suppliers for business purposes.

It is important to note that each of these areas may well encompass deliverables that relate to students, staff, teaching, research and community and how we, as an organisation can put activities in place to encourage a pathway to reconciliation.

It is anticipated that each working group will meet on 2-3 occasions before the end of year. Meetings will be via videoconference.

If you are interested, please submit an expression of interest, via email to: cmaxwell@csu.edu.au

Your expression of interest should include the following information:

Name; Position Title; Area of Employment or study; campus location; an indication of which RAP focus area you are interested in working with and a short paragraph (no more than 150 words) on your interest and commitment to ‘Our CSU RAP’ and what you believe you can bring to the working group.

Expression of Interest submissions must be received by COB Friday 15/9/17.

Further information on ‘Our CSU RAP’ can be found [online](#).

Research outputs information for ERA

The Research Office is currently preparing for the Excellence for Research in Australia (ERA) and Engagement and Impact (EI) 2018 submissions. A key process to prepare for these programs is to make sure all research outputs published from 2011 – 2016 are recorded in the CRO repository, complete with ERA relevant information, including Field of Research (FoR) codes and their percentage assignments.

We will be sending out individual emails to all ERA eligible researchers in the coming weeks to request your cooperation in ensuring your outputs have been correctly recorded. The email will provide a list of all currently recorded outputs and FoR information to assist you with the checking process, and will also detail the necessary deadline for submission of data to ensure all data have been captured prior to the commencement of ERA verification and optimisation processes. Detailed instructions on how to check and modify your output FoR code assignments will also be included in the email.

More information about [ERA](#) and [EI](#).

5RP COMPETITION



5RP - Now open for registrations. Researchers deliver a **FIVE** minute presentation of their current or recently completed research with the aid of **THREE** PowerPoint slides.

The competition is open to Level A, B, and C academics, provided they have an employment contract (continuing or fixed-term) current at the time of the national finals (21 November).

CSU internal institutional finals for groupings on the week of 9 October 2017. Registrations close on Thursday 28 September.

Group One – Sciences and Health – (Biological Sciences and Biotechnology; Health and Medical Sciences; Engineering, Mathematics and Informatics; and Physics, Chemistry and Earth Sciences)
Group Two – Arts, Humanities & Social Sciences – (Humanities and Creative Arts; Education, Social and Behavioural Sciences; Law; and Business, Commerce and Economics)

The competition is designed to showcase recent research projects. Research presented must be current, meaning either in the process of being completed or published in 2016 or 2017, and will be judged against the six criteria detailed in part six of the guidelines.

More information: If you'd like a copy the rules and eligibility criteria, please contact your Faculty Research Liaison Officer – Lisa McLean in FOAE lmclean@csu.edu.au, Kerry Madden in FBJBS kmadden@csu.edu.au and Deborah Munns in FOS dmunns@csu.edu.au

To register: Please contact Deborah Munns – dmunns@csu.edu.au with details of which heat you would like to register for, the campus you will be presenting from and the title of your presentation. Slides will be collected the week prior to the heats.



There is not one mixed methods approach but a number of research designs that incorporate mixed methods. QSR's best practice guide includes tips for combining qualitative and quantitative data analysis with NVivo. [Download here.](#)

Your ORCID profile:

ORCID has great potential for measuring your impact and engagement. Did you know that adding your ORCID link to your published papers can help you find details of social media engagement with your papers?

Publishers like Wiley, Taylor and Francis, are asking for your ORCID to include with your article when you submit these online. Once published in Taylor and Francis for example, your ORCID appears as a badge next to your name on the first page of your published article. When viewed as an Interactive PDF, your ORCID badge in that paper can link the reader to your ORCID profile.

During 2016, publishers, including Springer Nature and Cambridge University Press, started integrating ORCID in their books systems.

The ORCID link also gathers information gathered from various altmetric applications, including PlumX, about the social media use, citation or downloads.

The Scopus and EBSCO databases currently provide PlumX Metrics. Researchers will also see PlumX metrics displayed in CRO profiles.

You can use this information as evidence of research or social engagement with your research output.



SAGE Research Methods Datasets: A Data Analysis Educational Tool.

Citation data: Medical reference services quarterly, ISSN: 1540-9597, Vol. 35, Issue: 3, Page: 319-25
Publication Year: 2016

Explore PlumX Metrics

What are PlumX Metrics? How can they help tell the story about this research? How can I use them?

[Learn more](#)

USAGE ▾	298	CAPTURES ▾	10
Abstract Views ◉	241	Exports-Saves ◉	9
Link-outs ◉	57	Readers ◉	1

More information is available in the [Library Research Impact](#) guide, also the [Researcher Profile](#) guide, and the [ORCID](#) site. [Contact a Faculty Liaison Librarian](#) if you need support in getting your ORCID to work with your CRO profile.

Library Research Support Page

Has been updated! It now has more links to make it easier to find research-related services.

The [Faculty Librarian Liaison Team](#) have been working on this for the last month or so, especially in response to the focus group work they did and the InSync survey results. The feedback from the focus groups highlighted the usefulness of providing information around the research cycle. The direct link is <http://library.csu.edu.au/research>

Upcoming Library Training

Date	Session Details & Registration
11th Sep 2017	Integration of Endnote & NVivo
13th Sep 2017	EndNote for Mac
14th Sep 2017	Finding & Using Theses & Dissertations
19th Sep 2017	Finding Research Funding Opportunities including Research Professional
21st Sep 2017	EndNote for Windows

ALLaN Bootcamps

Friday, 29th of September - 9am-5pm AND Tuesday, 24th of October - 9am-5pm

These bootcamps are full days of focussed work on your own goals (writing, editing, planning, reading, data analysis, etc.). You can expect more productivity than usual, working alongside other people in a friendly group. We adhere to a strict schedule of uninterrupted working blocks, with regular short breaks. (Pomodoro technique)

You can participate either online in Adobe Connect, or if you are in Wagga Wagga you can join us in person. No need to register, but if you would like a calendar invitation for one or more of these bootcamps, including the schedule for the day and links to join online and enter your goals, email Cassily Charles, ALLaN Coordinator (Postgrad) - ccharles@csu.edu.au

Bootcamps are provided for higher degree research candidates, but all staff and students are warmly welcome, as always. Questions? ccharles@csu.edu.au

QCU

The Quantitative Consulting Unit (QCU) provides statistical assistance to CSU's research students. Some of the services the QCU can provide are:

- General statistical consultancy.
- Experimental and survey design.
- Planning experiments – Sample size, Power Analysis etc.
- Analysis – advice, support and completion of analysis.
- Workshops for people looking to enhance their statistical processing skills.

Through the QCU research Honours, Masters and PhD students are offered a free initial consultation to provide a kick-start to their research to ensure that they embark on a path that will lead to successful completion of their research. Preparation and design of your research project is paramount to your success in conjunction with our service policy.

John Xie has now settled into his full-time position of Statistician, The QCU would like to again thank Wayne Robinson for filling in for the QCU while we were without John. We all greatly appreciate his help.

John has some new ideas, plans and procedures for the QCU - nothing too dramatic though. We will be commencing our regular monthly cRow meetings, which will include an 'R' tutorial that will then be uploaded to our webpage for future reference. Within this section of our webpage, fortnightly 'R' material will be added for anyone to access. John will be conducting workshops again within the coming months. He also plans to set aside 2 x ½ days per week for anyone who wishes to seek assistance with an 'R' enquiry which will be done via a bridget session. If you are interested in attending these sessions please let Coral know the details will be emailed to you (see contact below).

Our 1st cRow meeting will be on September 4 at 1:30 pm in meeting room 1 building 475. The presentation from this meeting will be uploaded to the QCU's webpage for future reference. John is also a lover of LaTeX. LaTeX is a free powerful open source document preparation system that is widely used amongst the scientific research community. More and more LaTeX is being used by people who need to write documents that include complex non-Latin scripts or people who simply want to produce professional documents. LaTeX offers authors ready-made commands for common requirements such as chapter headings, footnotes, cross-references and bibliographies (and it can be used in conjunction with your EndNote library). LaTeX is also the choice of people working in mathematical disciplines, because it has capabilities in mathematical typesetting that leave standard word-processing facilities for dead. For all its strengths, though, LaTeX has an admittedly steep learning curve; the first steps towards learning and using LaTeX can be challenging.

To this end, the CSU LaTeX User's Group has been formed and is dedicated to bringing together LaTeX users to exchange knowledge and inspire new users and will be meeting monthly both online and face-to-face in Wagga. All research candidates and other staff and students are very welcome to attend these meetings.

- hear talks on LaTeX -related topics
- share knowledge and experience
- provide LaTeX beginners with an opportunity to meet more experienced users
- support one another to learn how to use LaTeX effectively and efficiently

This group is for anyone who is currently using LaTeX, trying to learn how to use LaTeX or someone who thinks that LaTeX might provide a solution to their document preparation needs. If you are

interested in finding out more about CSU LaTeX User's Group, please contact Coral on 32223 or John on 32229 for any further information.

Our 1st LaTeX meeting will be held on September 4 at 9.30 am in meeting room 1 building 475.

Once we have dates for our workshops you can find the details on the [Professional Development Calendar](#). If you or anyone you know who might be interested in knowing more of what the QCU can offer please contact Coral on 32223 or email cmoffat@csu.edu.au for any further information.

Writing a Successful Grant Application by Aligning Research with Industry Pressure Points



[VIEW Q&A](#)

[RECEIVE BY EMAIL](#)

The Australian Government has recently changed how it allocates grants for research funding and it's impacting researchers, with grant success rates dropping from some 30% to 10% in the span of 15 years. To counteract these receding numbers, a greater emphasis must be placed on aligning research with industry priority areas and on improving collaboration between industry planners.

To help encourage the writing of successful grants and broker collaboration between Government, business, industry and end users, we chat to Leanne Harvey, Executive General Manager at the Australian Research Council, ahead of the Research Funding Summit 2017.

[READ Q&A: Writing a Successful Grant Application](#)

Download the full [Q&A](#) to learn more about: Effective grant writing tips; Grant assessment criteria; Research funding challenges in Australia; The ARC's research priority areas; Improving collaboration for innovation and commercialization.

Funding Opportunities

In this Bulletin, we have highlight some of the latest funding opportunities from external grant schemes. Please remember that completed final applications must be submitted to the [Research Office](#) ten (10) working days prior to the funding body deadline to allow for a review by the Deputy Vice-Chancellor (Research, Development & Industry). Further important information on developing and submitting an application is on the [Grant Application Process page](#) of the Research Office website.

Women in STEM



There's no shortage of research attesting to the importance of promoting STEM (science, technology, engineering and mathematics) to members of the university sector engaged in learning, teaching and research. However statistics show that science, technology, engineering and mathematics are still dominated by male students and teachers.

But change is on the agenda, as governments, global organisations and universities move to recruit more women into STEM fields.

For our 2017 Travel Grant series, we have partnered with Virgin Australia to recognise women STEM. Our Travel Grants provide travel funding for successful applicants to enrich their area of study or academic work on a trip-of-a-lifetime, wherever their professional interests take them.

If you are female, employed by an Australian university or a research organisation, or you are a PHD student with a STEM related focus - we want you to apply for the Campus Travel and Virgin Australia 2017 Travel Grant.

You are invited to submit a proposal that details a STEM-related project or activity you have been working on or have completed within the past six months. Your submission needs to explain how your work supports the 'development of a high-quality STEM project, enterprise or initiative and what the outcomes are or are expected to be'. Your project, research or activity can relate to any of the STEM fields – as long as it supports the further development of STEM learning, development or outcomes.

WHAT IS INCLUDED?

The Travel Grant includes \$5,000 worth of airfares to be spent on Virgin Australia airfares and \$1,000 for accommodation, transportation, tours or other travel arrangements*.

HOW DO YOU APPLY?

To apply, answer the following questions in 500 words or less. (After 500 words the judging panel will stop reading your submission!)

1. What is your project or initiative?
2. How does it support the further development of STEM for students, or for academic or professional development purposes?
3. What outcomes are you hoping for from your project or what are your expectations of the impact/results?
4. Where would you go and how would you use the travel grant funds?

Applications close Friday 20 October 2017. The successful applicant will be notified by phone and email by Thursday 30 November 2017. [More information.](#)

SIEF-Australian Academy of Science Fellowships

The Australian Academy of Science invites nominations from Australian-based early career researchers to attend the 68th Meeting of Nobel Laureates in Lindau (dedicated to Physiology and Medicine), to be held in Lindau in Germany, 24 June -29 June 2018. The Science and Industry Endowment Fund is providing financial support through the Science and Industry Endowment Fund -

Australian Academy of Science Fellowships to the Lindau Nobel Laureate Meetings for Australian attendance at the Meeting.

The application must be submitted by the Research Office (or equivalent) of the institution. Each institution is limited to applying for two grants on behalf of two early career researchers. Eligible institutions include Australian universities, Australian publicly-funded research organisations and research-focussed institutions.

The successful candidates will receive a grant-in-aid of up to \$6,750 (GST exclusive) towards the cost of an international return economy airfare from Australia to the international airport closest to Lindau (up to \$3,250). In addition, successful candidates are invited and expected to attend Science at the Shine Dome, an annual celebration of science held at the Australian Academy of Science in Canberra, 21-24 May 2018.

To view terms and eligibility requirements and to apply for this award please visit the Academy's [website](#). **The deadline for nominations is 5pm AEDT on Tuesday 3 October 2017.**

Contact: T (02) 6201 9484 | E lindau@science.org.au

NSW Health Early-Mid Career Fellowships

The priority research theme for round 2 is cardiovascular health, it will be a two stage process, the expressions of interest (EOI) and full application.

The fellowships promote the participation of early-mid career researchers in high quality research projects in cardiac health across the spectrum, from basic and biomedical sciences through to health services and population health research.

To complement our research capacity building initiatives, these fellowships are available to staff across the health and medical research sector including in NSW Local Health Districts and Specialty Health Networks; universities; medical research institutes.

Funding will be provided to contribute towards the salary of early-mid career researchers for up to three years and for a one-off grant to support the fellows direct research costs. Funding will be available under two categories in Round 2.

1. Full Fellowship (Fellowship and Project Funding)
2. Project funds for existing Fellows with at least two years left on the Fellowship

The Application Guidelines and EOI form are available on the NSW Health website at: <http://www.health.nsw.gov.au/ohmr/Pages/emc.aspx> EOI applications will close on 3 October 2017.

Information sessions on the fellowships will be held in collaboration with the Cardiovascular Research Network (CVRN) on the following dates:

- Information Workshop 4 September 2017, 8-10 am
- Information teleconference 6 September 2017, 12 - 1.30 pm

Please register your interest in participating by emailing emc@doh.health.nsw.gov.au or direct any queries about the fellowships to this email address, tpenn@doh.health.nsw.gov.au or Tel. 02 9391 9929 | Mob. 0412 246 361

2018 Science and Innovation Awards



Applications are now open for the 2018 Science Awards. If you're 18-35, this is your chance to apply for a grant of up to \$22,000 (inc GST) to fund your project on an innovative or emerging scientific issue that will benefit Australia's primary industries.

Interested in applying? Visit the [2018 Science and Innovation Awards website](#) for all the eligibility info, application form, meet the Award partners plus details on the 11 award categories available.

Applications close 5pm AEST Friday 13 October 2017

Questions? Email scienceawards@agriculture.gov.au or phone 02 6272 2260 or 6272 2303.

AgriFutures Australia

AgriFutures Australia have announced the following programs are participating in the 2017 open call for research proposals, with a closing date of 5pm (AEST) 20 September:

Ginger

The Ginger Program RD&E Plan 2017-2022 is developed around three critical objectives:

- * drive on-farm productivity - disease management, innovative technology and certified seed
- * lift the demand for Australian ginger - brand and market research
- * encourage industry engagement - extension, communication, leaders and partners

Honey Bee & Pollination

The Honey Bee and Pollination five-year RD&E Plan will be considered, with priority given to proposals that address the following identified strategies.

- * undertake *Tropilaelaps clareae* research and ensure incursion response strategies are appropriate and best practice
- * develop non-chemical controls for pest and diseases to ensure Australian apiary products
- * develop better understanding of the interaction between native flora/fauna and honey bees
- * develop technologies and techniques for determining floral resource yields
- * determine native flora flowering cycles

* determine the likely climate change impact on floral production and the beekeeping and pollination services industries through a desktop study

Pasture Seeds

The Pasture Seeds five-year RD&E Plan will be considered, with priority given to proposals that address the following strategies.

Industry impact: Deliver harvesting methods for sub-clover and medics that improves the efficiency and speed of harvest and contributes to better soil conservation and environmental outcomes.

Export Fodder

Details to be advised. More information about the proposal process can be found at the following link: http://www.agrifutures.com.au/for-researchers/?_cldee=bWFya2VsbHlAY3N1LmVkdS5hdQ%3d%3d&recipientid=contact-4e9f2add7d8ce71180c7000c29260fc8-c17d25f9900a455887a4aa4218cee823&esid=3c61ffc5-df8d-e711-80c7-000c29260fc8

More Grants Open:

2017/18 North East CMA Integrated Incentives and Grants Program, Closes October 11

North East CMA has \$1 million available through a range of Victorian and Australian Government programs for landholders and community groups.

Programs and priorities include:

- Riparian projects to protect, restore and actively manage rivers, streams and wetlands
- Native vegetation management and enhancement including weed control, revegetation, fencing and alternative watering points
- Victorian Landcare Grants to support community based NRM groups to build skills and capacity to undertake NRM activities
-

This program follows a highly successful integrated incentives and grants program in 2016/17 with more than \$700,000 delivered directly to 38 landholders across the region and a further 44 grants for Landcare activities.

To ensure eligibility for the upcoming program, current grant and incentive recipients are reminded to have all reporting up-to-date and submitted. [Information can be found here...](#)

\$22,000 for Young Agriculture Innovators, Closes October 13

Applications are now open for the 2018 Science and Innovation Awards for Young People in Agriculture, Fisheries and Forestry. People aged 18-35 can apply for a grant of up to \$22,000 to fund your project on an innovative or emerging scientific issue that will benefit Australia's primary industries.

There are 11 categories: cotton; dairy; established, new and emerging rural industries; fisheries and aquaculture; grains; health and biosecurity; meat and livestock; pork; red meat processing; viticulture and oenology and wool.

Winners of the industry category are then invited to apply for the Minister for Agriculture and Water Resources' Award, which provides additional funding for an extended research project. For more information email scienceawards@agriculture.gov.au or phone 02 6272 2303

Norman Wettenhall Small Environmental Grant Scheme, Current Round now open

The Small Environmental Grant Scheme will provide support for groups or individuals undertaking projects that will make a positive difference to the natural living environment, in land, sea or air, rural or urban.

At the moment Norman Wettenhall are looking for projects around flora and fauna conservation, threatened mammal conservation, and landscape restoration and education. [Read more...](#)

The ARC Harry Windsor Research Grants Scheme



These grants are named in honour of the late Dr Harry Windsor, a leading Australian heart surgeon who played a key role in ARC for many years. Dr Windsor performed the first heart transplant operation in Australia and was a prominent cardiothoracic surgeon at Sydney's St Vincent's Hospital. Dr Windsor was actively involved with ARC and its Board from 1955 until his death in 1987.

These awards are being offered nationally to support research in:

- Tuberculosis
- Respiratory diseases related to other infections
- Smoking-related respiratory diseases

Within these categories, research projects examining TB/HIV, Community issues of the health of disadvantaged groups that relate to the work of ARC are particularly encouraged. Several grants of approximately \$50,000 are offered each year.

Grants are available for projects submitted to the National Health and Medical Research Council (NHMRC) which are considered fundable but which do not reach the cut-off mark for funding in any one year.

An information sheet and grant conditions can be downloaded. [Click here.](#)

The ARC Harry Windsor Research Grants Scheme Shortlist Application Form can be downloaded. [Click here.](#)

What's New on the Professional Development Calendar

Date	Session Details & Registration
11th Sep	Integration of Endnote & NVivo
11th Sep	Reading the Literature Critically
12th Sep	Establishing and Managing Research Projects with multiple partners, particularly Government Agencies
12th Sep	Writing the Research Proposal
13th Sep	EndNote for Mac
14th Sep	Finding & Using Theses & Dissertations
14th Sep	Managing Research Funds and Budgets at CSU
14th Sep	Getting the Feedback You Need
18th Sep	Critical Writing: Part 1
19th Sep	Finding Research Funding Opportunities including Research Professional
19th Sep	Critical Writing: Part 2
20th Sep	Introduction to accessing ABS data and other important datasets
20th Sep	Critical Writing: Part 3
21st Sep	EndNote for Windows
25th Sep	Writing More Clearly: Part 1
26th Sep	Writing More Clearly: Part 2
26th Sep	Presenting your research at a conference: The Basics
27th Sep	Writing More Clearly: Part 3
3rd Oct	Grammar Clinic for Researchers
4th Oct	Working with the Media in Research
5th Oct	NVivo, Advanced
5th Oct	Audit Your Time
9th Oct	Endnote Online + iPad
9th Oct	Developing your 'Voice' as a Research Writer - Part 1

Date	Session Details & Registration
10th Oct	Developing your 'Voice' as a Research Writer - Part 2
11th Oct	Establishing and managing large international research projects in developing countries
12th Oct	HDR Candidate Welcome & Induction
16th Oct	Introduction to Planning Surveys and Designing Questionnaires: Part 1
17th Oct	Using Library Databases
17th Oct	Introduction to Planning Surveys and Designing Questionnaires: Part 2
18th Oct	Introduction to Planning Surveys and Designing Questionnaires: Part 3
19th Oct	Introduction to Research Application and Administration
24th Oct	NVivo, Session One
25th Oct	How to Develop a Research Proposal
26th Oct	NVivo, Session Two
31st Oct	Ethics in Research involving Humans, Planning for Ethics Approvals & Working with the Ethics Committee
14th Nov	Introduction to GIS & Spatial Analysis
15th Nov	Structuring & Crafting Your Thesis
28th Nov	HDR Candidate Welcome & Induction
30th Nov	Supervisor Series - Module 1 – Induction

CONTACT

We welcome contributions, feedback and suggestions for the Bulletin:

RESEARCH OFFICE

Ph: (02) 6933 2578

Email: researchpd@csu.edu.au

<http://www.csu.edu.au/research>