

## General Information

To access an Eduroam Wireless Network, you must first be at an EduRoam enable Institution and not on a CSU campus. The instructions below will guide you through the Configuration and access steps to connecting to an EduRoam Wireless Network. **Note:** that Some EduRoam institutions only allow VPN access back to CSU whilst others also allow Internet traffic.

## Requirements

Your laptop must meet the following requirements:

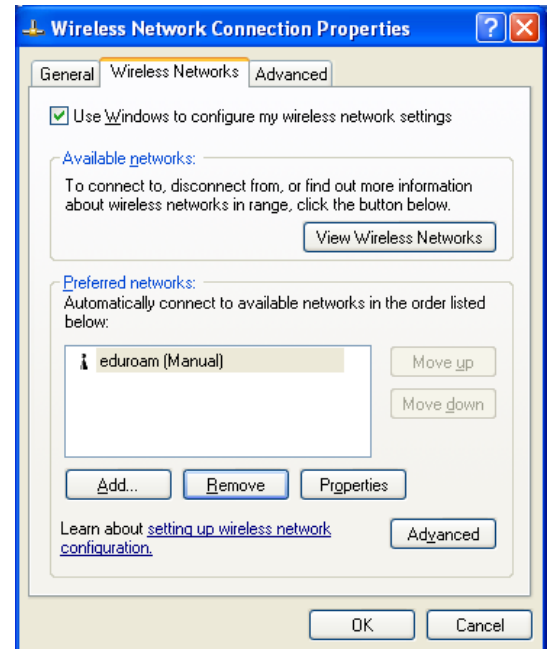
- Windows 2000 or Windows XP running all current service packs, with a windows supported wireless card
- Administration rights on your computer
- Your CSU Username and Password

## Section 1 - Connecting to the CSU Eduroam Wireless Network

### Step 1

Click on the Start button in the lower left hand corner on your screen and select “**Control Panel**”. Click on the link labeled “**Network Connections**” to see a list of your network connections again.

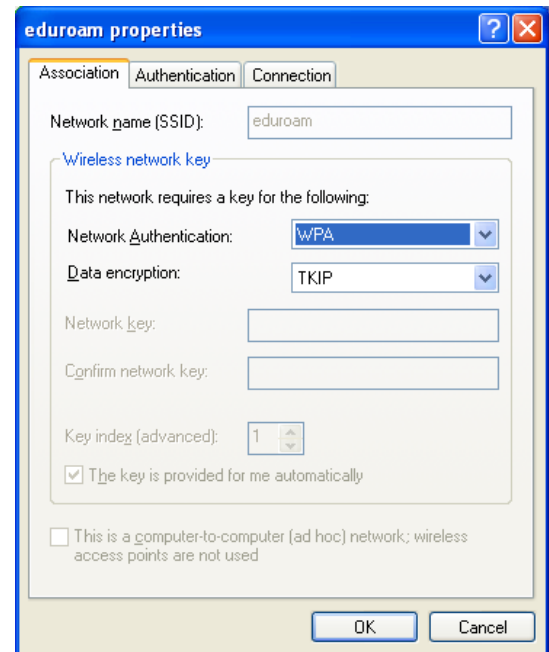
Right click on your wireless connection, select properties, then select the “**Wireless Networks**” tab. In the Preferred network section click the “**Add...**” button.



## Step 2

Enter “**eduroam**” into the “Network name (SSID)” field. Under Network Authentication select “**WPA**” and select “**TKIP**” under Data Encryption.

Now click on the “**Authentication**” tab. Under EAP type select “**Protected EAP (PEAP)**” and then click the Properties button.



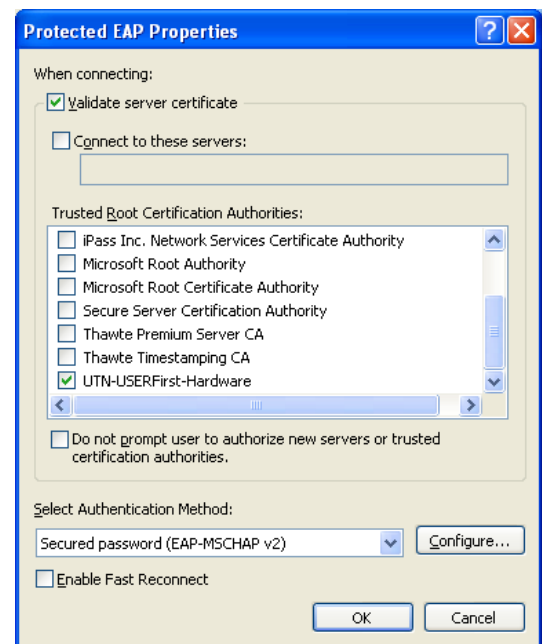
## Step 3

Un-tick the box labeled “Connect to these servers”. Also tick the “UTN-USERFirst-Hardware” Certification Authority which is at the bottom of the list. Click on the Configure button.

In the window that appears un-tick “**Automatically use my Windows login name and password (and domain if any)**” and click OK.

Click the OK button to close the Properties window.

When you try to connect you will be asked to validate a server Certificate, simply click “OK”.



## Step 4

Right click on your wireless connection again and select “View Available Network Connections”.

Double click on the network called “EDUROAM” to connect (if it has not already done so). A yellow icon should appear at the bottom of your screen similar to the image to the right. Click on it.

## Step 5

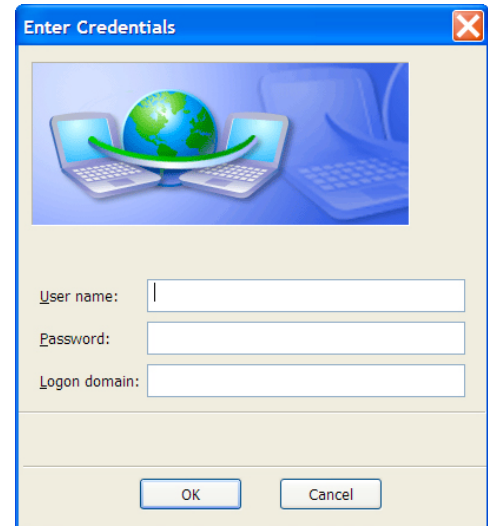
When you try to connect you will be asked to validate a server Certificate, simply click "OK".



## Step 6

You will be asked to log into the wireless network. Your eduroam username is in the format of "username@csu.edu.au" – eg: [jbloggs@csu.edu.au](mailto:jbloggs@csu.edu.au). Place your EduRoam username into the "User Name" field, and your CSU password into the "Password" field. Click the "Ok" button.

EG:  
User Name: jbloggs@csu.edu.au



**Congratulations, you have connected to the CSU eduroam wireless network.**