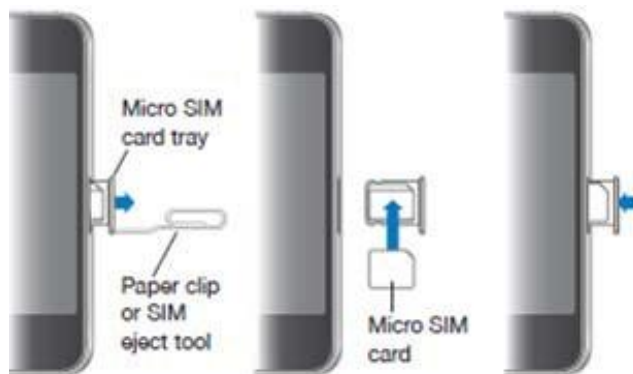


iPhone initial setup guide for Staff

Installing the micro SIM Card in an iPhone 4

If your micro SIM card was not preinstalled you must install it before you can use your iPhone. iPhone 4 use micro SIM cards which are smaller than the standard SIM card used in most other mobile phones.



Install the SIM card

1. Insert the end of a paper clip or SIM eject tool into the hole on the SIM card tray.
Push firmly, straight in until the tray pops out
2. Pull out the SIM card tray and place the micro SIM card in the tray as shown
3. With the tray aligned and the micro SIM card on top as shown, carefully replace the tray

Activating the SIM card

If you have ordered a new handset and new phone number from the CSU Computer Shop it will be activated by DIT prior to delivery.

If it is a replacement for an existing mobile phone and you wish to retain the same phone number a DIT staff member will step you through the activation process once you have received the iPhone and new micro SIM card. You will need to contact the IT Service Desk to request this when your items arrive.

Once Telstra transfers your existing phone number to the new micro SIM card you can no longer use that SIM card in your existing handset, it will no longer work.

This is why the phone is sent to you for activation, so your service will only be interrupted for the shortest possible time.

Setting Up your iPhone

Before you can use your iPhone you must set it up in iTunes. (this initial connection to iTunes is known as unbrickinDuring setup, you can create a new Apple account or specify an existing Apple account (if you already have one). iTunes will record the serial number of your iPhone in case you ever need it.

Set up your iPhone

1. Download and install [the latest version of iTunes from www.itunes.com/download](http://www.itunes.com/download)
2. Connect iPhone to a USB 2.0 port on your Mac or PC using the cable that came with your iPhone
3. Follow the on screen instructions

Once you have set up your iPhone using iTunes you are ready to configure access to CSU resources.

CSU Staff email setup

If you would like to add your CSU email account to your iPhone now click [here](#) for instructions.

Connect to the CSU wireless network (CSUconnect)

If you would like to connect to the CSU wireless network click [here](#) for instructions.

Overview of connecting to the Internet

Connecting to the Internet

iPhone connects to the Internet whenever you use Mail, Safari, YouTube, Stocks, Maps, Weather, the App Store or the iTunes Store.

How iPhone Connects to the Internet

iPhone connects to the Internet using either a wireless network or the 3G data network.

iPhone does the following, in order, until connected

Connects to the last wireless network you used that's available.

If no previously used Wi-Fi networks are available iPhone shows a list of Wi-Fi networks in range.

If no Wi-Fi networks are available or you choose not to join any, iPhone connects to the Internet using 3G.

If no Wi-Fi networks are available and 3G isn't available, iPhone cannot connect to the Internet.