

What is the CSU Proxy Server

The CSU proxy server is a service that allows students and staff to make indirect network connections to other network services. When accessing the internet, you will connect to the CSU proxy server, which will request a connection, file, or other resource available on a different server from anywhere on the world wide web.

The proxy provides the resource either by connecting to the specified server or by serving it from a cache of web sites kept by CSU. Pages that are cached allow local network access more quickly or reliably.

Setting up your computer to use the CSU Proxy

Provided here are instructions on how to set up your computer's web browser to use the CSU Proxy. Provided here is instructions for setting up Internet Explorer 6.0 for Windows.

CSU Proxy Setting for Internet Explorer 6.0

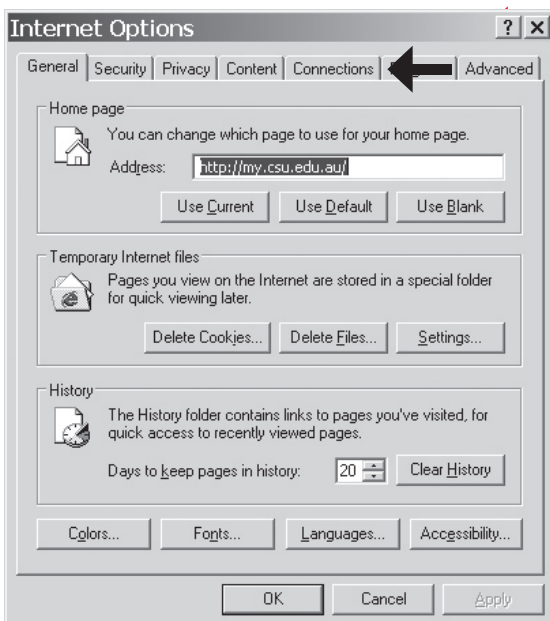
Step 1

Open up Internet Explorer and go to the "Tools" menu and select "Internet Options..."



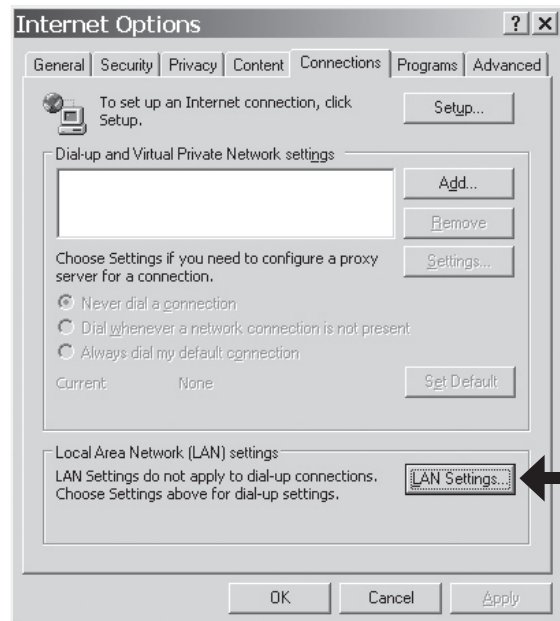
Step 2

Click on the "Connections" tab.



Step 3

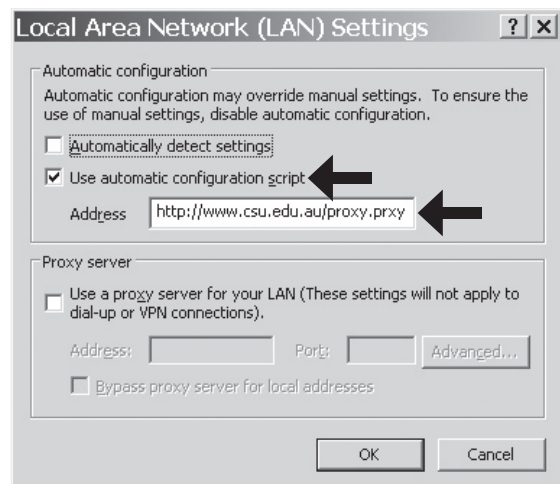
Click on the "LAN Settings..." button.



Step 4

Make sure the "Automatically detect settings" is un-ticked. Tick "Use automatic configuration script".

In the address field type in the following <http://www.csu.edu.au/proxy.prxy>



Step 5

Click the "Ok" button on both windows. You should now have access to the internet.

To test if the proxy details are correct, go to an external website such as <http://www.google.com.au>

IT and Telephone Support in Residences

For support and assistance with connecting to the CSU Network and Internet, and for reporting faults with Telephones and network connections, please contact the IT Service Desk on 84357.

IT and Telephone Support in Residences

For support and assistance with connecting to the CSU Network and Internet, and for reporting faults with Telephones and network connections, please contact the IT Service Desk on 84357. Please do not contact the Accommodation Office with IT problems.