

Introduction

This set up guide is for staff with personal Mac Laptops to connect to the CSU Wireless Network. Please note that only CSU provided laptops can access the Staff Wireless Network. Privately owned staff laptops need to use the CSU Guest Network for Wireless Access.

Getting Started

To access the Gurest Wireless Network, you must first configure your laptop and register. Provided here are set up instructions which will guide you through the Configuration, Registration and access steps.

Requirements

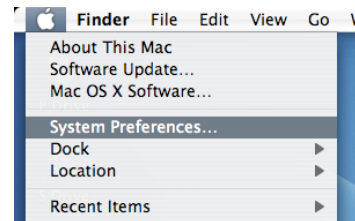
Your Windows laptop must meet the following requirements:

- MacOS X Version 10.3 or Higher
- An Apple Wireless Airport card
- Administration rights on your computer

Section 1 - Configuring Your Computer

Step 1

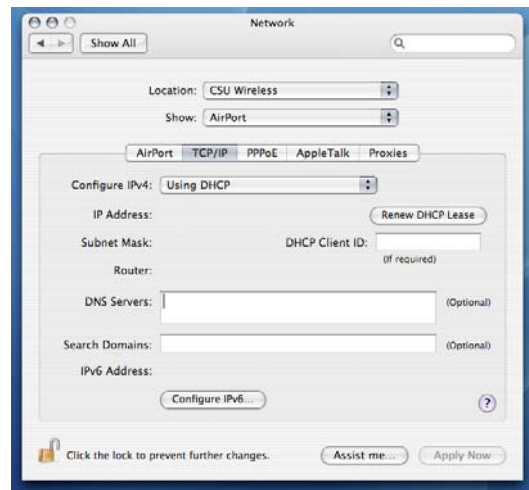
Open the System Preferences window by going to the Apple menu at the top left of your screen and selecting the "System Preferences..." option. Once the window has opened click on the "Network" icon.



Step 2

From the "Show" drop down menu select "Airport". Click on the "TCP/IP" tab so you see a window similar to the one to the right.

From the "Configure IPv4" menu select "Using DHCP". Make sure the "DNS Servers" and "Search Domains" sections are empty.



Step 3

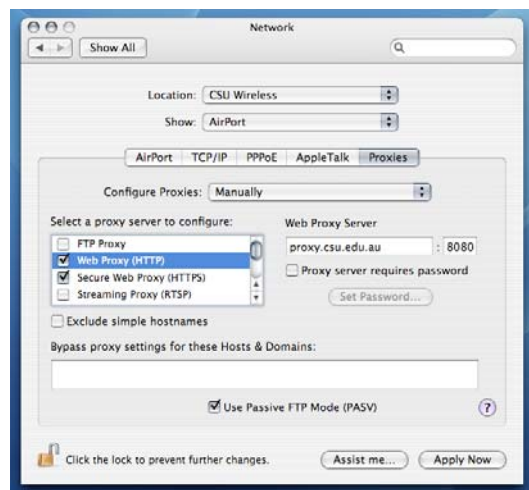
Click on the "Proxies" tab so you see a window similar to the one to the right.

In the box to the left of the window place a tick next to "Web Proxy (HTTP)" and to the right enter an address of "proxy.csu.edu.au" with a port of "8080".

Place a tick next to "Secure Web Proxy (HTTPS)" and enter the same address and port details to the right.

Enter "csu.edu.au" into the "Bypass proxy settings for these Hosts & Domains" field.

Click the "Apply Now" button and close the window.



Continue to Section 2 - Registering Your Computer

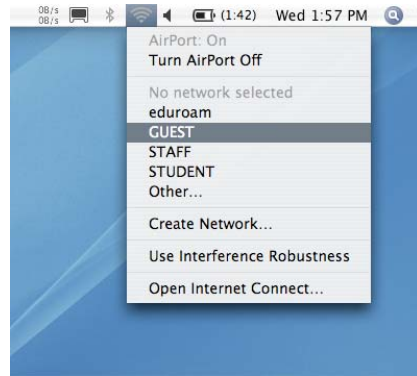
Section 2 - Registering Your Computer

Step 1

Click on the Apple Airport icon near the top right of your screen to display the wireless networks menu.

If the Airport status is off ("Airport: Off") select the "Turn Airport On" option.

Select the "GUEST" network from the list.



Step 2

Open your web browser (such as Safari) and attempt to go to a simple web site such as www.csu.edu.au

You should see the Network Registration page, similar to the page (See Right). This page is a capture page, to enable network registration.

Enter your csu username and password into the appropriate fields, and select from the available list of registration options. The option selected will be billed to your School/Division account code. You will need this information to be able to complete the registration process.

Once you have entered your details, Click Next

Register for:	Duration	Price
<input checked="" type="radio"/>	1 day(s) (expiring Midnight Mon 7th Nov 2005)	\$2
<input type="radio"/>	2 day(s) (expiring Midnight Tue 8th Nov 2005)	\$4
<input type="radio"/>	3 day(s) (expiring Midnight Wed 9th Nov 2005)	\$6
<input type="radio"/>	4 day(s) (expiring Midnight Thu 10th Nov 2005)	\$8
<input type="radio"/>	5 day(s) (expiring Midnight Fri 11th Nov 2005)	\$10
<input type="radio"/>	6 day(s) (expiring Midnight Sat 12th Nov 2005)	\$12
<input type="radio"/>	7 day(s) (expiring Midnight Sun 13th Nov 2005)	\$14

Step 3

The Registration confirmation page should now appear. If the details listed are correct, tick the small box located on the page. To accept the registration, click Register.

Once the "registration successful" page appears, quit your web browser and restart your computer.

Please confirm your registration details below:

Computer Address:	00:12:f0:b5:6c:af
Number of days:	1 (expiring Midnight Mon 7th Nov 2005)
Charge to user:	barrow
Account Code:	M102.30
Total Amount:	1 day(s) @ \$2 per day = \$2

Budget Manager(s) for this account code will be notified via email of this registration.

If these details are correct please confirm registration by selecting the following "checkbox" then clicking "Register".

Register Cancel

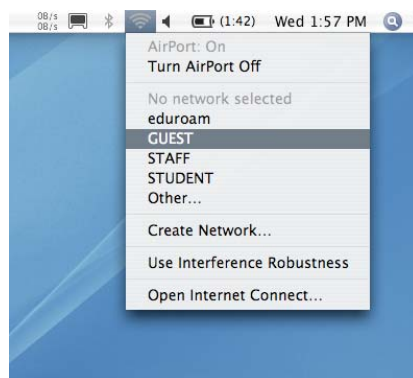
Continue to Section 3 - Connecting to the CSU Guest Wireless Network

Section 3 - Connecting to the CSU Guest Wireless Network

Step 1

Click on the Apple Airport icon near the top right of your screen to display the wireless networks menu.

Select the "GUEST" network from the list.



Congratulations, you have connected to the CSU Guest Wireless Network.

Important Information for CSU Wireless Network Users

Please note that it is a condition of use for all wireless users to ensure that their laptop has anti-virus software installed and all necessary security patches and updates as recommended by your operating system vendor.

Please be aware that as with all network access, no network is 100% secure and it is essential that you take every precaution to ensure that your computer is virus free and your password and other sensitive information is secure at all times.