

CSU Replay

Download & Install Personal Capture Software on Personal PC/ Laptop

Written by:
Education and Training Team
Customer Services Management
Division of Information Technology

October 2011
Version 1

Contents

CSU Replay Overview	2
CSU Replay Components.....	2
• CSU Replay Website	2
• CSU Replay Central (EchoSystem Server):.....	2
• CSU Replay Capture Appliance.....	2
• CSU Replay Podium Capture Software	3
• CSU Replay Personal Capture.....	3
• CSU Replay External Media Ingest.....	4
• CSU Replay Interact	4
• CSU Replay iTunes U.....	4
CSU Replay Policies and Guidelines.....	5
CSU Replay Personal Capture Software Hardware and Software Requirements ..	5
CSU Replay Support	5
.....	6
Downloading and installing the Personal Capture software.....	6
Part one: Downloading.....	6
Part two: Installing the Personal Capture Software	10

CSU Replay Overview

CSU Replay is an easy and effective way to create learning and teaching and non-learning and teaching content for on-demand use, that may be integrated into the CSU Online Learning Environment.

CSU Replay enables the capture of audio and video media recordings from select teaching and production spaces and compliant CSU PC's. It also enables capture of audio and video from personal PC's and laptops that have CSU Replay software installed. It enables the uploading of external media (audio and video recordings) that has been captured using a different device other than a component of CSU Replay. It enables post production editing of captured recordings by the author and further professional editing (if required). It provides storage of audio and video media recordings in common formats within a managed repository accessible to staff and students. Finally it will provide delivery of published video and audio recordings as video vodcasts or audio podcasts to staff and students.

CSU Replay Components

CSU Replay currently comprises of eight components with the integration of a ninth component (CSU Replay IVT recording) currently underway. CSU Replay Components include:

- **CSU Replay Website:** the one stop shop for finding out all information about CSU Replay. Information including how to access, book, install, use, etc. various CSU Replay components; the policies and guidelines that must be adhered to when using CSU Replay; as well as detailed CSU Replay training guides for each component and other associated functionality of CSU Replay. [Insert URL to csu replay site location](#)
- **CSU Replay Central (EchoSystem Server):** the central repository for storing, editing and managing all CSU Replay *published* recordings. All CSU Replay recordings captured using CSU Replay Capture Appliance and CSU Replay Podium Capture are automatically published here. When a CSU Replay Personal Capture (PCap) recording is published it is uploaded and published here. All uploaded third party media recordings are also stored here. CSU Replay user's assigned the appropriate level of presenter privileges (i.e. Academics, ED's, Other CSU staff) to relevant subjects may edit and manage recordings stored here. URL <https://ecessprod-secure.csu.edu.au:8443>
- **CSU Replay Capture Appliance :** Based upon a scheduled booking, this component automatically records lectures, presentations, teaching material, etc. through pre-installed hardware located in select teaching spaces (22 CSU lecture theatres currently have this capability). This component is integrated into a lectern and will record all the information that is displayed upon the primary video projector in the room. This includes, the computer, document

CSU Replay: Download and install Personal Capture software on Personal PC/Laptop

camera or DVD player that is installed in the lectern or a laptop plugged into the laptop port and all audio going to the speakers installed in the lecture room. Following the capture of these recordings, you will receive an email notification advising that the recording has been published and is available. You can then edit the recording, associated metadata and make it available via CSU Replay Central (EchoSystem Server) so that the content is delivered via an RSS feed or a direct link inserted into a subject site in Interact or available for streaming through the CSU website. The RSS feed could ultimately be retrieved through podcasting software on either a student/staff PC or a mobile device.

- **CSU Replay Podium Capture Software** – This component is similar to automatic recording via the capture appliances as above, but instead of the physical capture appliance installed within a lectern, the CSU Replay Podium Capture software is installed on the teaching space PC. It also differs in terms of recording capability, it will only record input into the computer; that is audio received via computer's microphone and images\presentations\video displayed on the computer monitor. It is not able to record all items such as the document camera, projector, etc. that are hooked up to the lectern unless the output of these devices is fed directly into the computer. It is possible to book a scheduled recording using CSU Replay Podium Capture software. Alternatively, Ad Hoc recordings can be performed using this component. For scheduled recordings, you must log into the teaching space PC within 5 minutes of the commencement time of your recording, your lecture will then be automatically recorded. For ad hoc recordings, you use the software to start an ad hoc capture, specifying the title, duration, subject and format of the recording. Following the capture of these recordings, you will receive an email notification advising that the recording has been published and is available. You can then edit the recording, associated metadata and make it available via CSU Replay Central (EchoSystem Server) so that the content is delivered via an RSS feed or a direct link inserted into a subject site in Interact or available for streaming through the CSU website. The RSS feed could ultimately be retrieved through podcatching software on either a student/staff PC or a mobile device.
- **CSU Replay Personal Capture** – Once this software is downloaded and installed, it enables you to record teaching\learning\presentation material using either a CSU or Personal PC/Laptop. Audio is recorded via PC microphone and video may be recorded via PC webcam and material (e.g. PowerPoint presentation, spread sheet) currently open on the computer. This component may be also be used to view and edit recordings locally. Once you are satisfied that the recording is ready to be published, you may publish the recording. Publishing a recording uploads and publishes the recording to the CSU Replay Central (EchoSystem Server) within the selected CSU

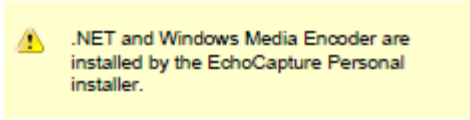
Replay subject. Following the publication of these recordings, you will receive an email notification advising that the recording has been published and is available. Users with the appropriate level of presenter privileges for the subject may then further edit the recording, associated metadata and make it available so that the content is delivered via an RSS feed or a direct link inserted into a subject site in Interact or available for streaming through the CSU website. The RSS feed could ultimately be retrieved through podcatching software on either a student/staff PC or a mobile device.

- **CSU Replay External Media Ingest** - This enables you to upload (ingest) pre-recorded material to CSU Replay Central (Echosystem server). Following the ingestions of these recordings, you will receive an email notification advising that the recording has been ingested and is available. Users with the appropriate level of presenter privileges for the subject may then further edit the recording, associated metadata and make it available so that the content is delivered via an RSS feed or a direct link inserted into a subject site in Interact or available for streaming through the CSU website. The RSS feed could ultimately be retrieved through podcatching software on either a student/staff PC or a mobile device.
- **CSU Replay Interact** – This component of CSU Replay provides the capability for CSU Academics to publish a link to all of their recordings stored on CSU Replay Central (EchoSystem Server) within their Interact subject work site. This component also enables CSU Students and Staff that have access to the relevant Interact subject work site to access, view, download and stream recordings. This link also contains the RSS feed links for the vodcast and podcast versions of the recordings and these RSS feeds could ultimately be retrieved through podcatching software on either a student/staff PC or a mobile device.
- **CSU Replay iTunes U** – This component of CSU Replay will enable CSU Students and Staff to access, view, download and stream available CSU subject/presentation recordings via iTunes U.

CSU Replay Policies and Guidelines

It is the user's responsibility to be familiar with and adhere to all CSU Replay policies and guidelines [Web link for CSU Replay policies and Guidelines](#)

CSU Replay Personal Capture Software Hardware and Software Requirements

OS	Hardware for audio and screen capture	Hardware for audio, screen, and webcam video capture	Software
Windows	Single Core 2.0 GHz processor 2 GB RAM 10/100 network interface 20 GB free hard disk space Internal audio device or USB port for audio capture Colour quality: Highest (32 bit)	Dual Core 1.8 GHz processor 2 GB RAM 10/100 network interface 20 GB free hard disk space Internal audio device or USB port for audio capture Colour quality: Highest (32 bit)	Windows XP: Microsoft .NET Framework 2.0 Service Pack 2 Windows Media Encoder 9 Series Windows Vista /7: Microsoft .NET Framework 3.5 SP1, related components, and any applicable hotfixes Windows Media Encoder 9 Series and any applicable hotfixes 

CSU Replay Support

For staff, please contact the Service Desk	For students, please contact Student Central
Monday to Friday - 8am - 6pm (GMT+10) Local Call Australia wide: 1300 653 088 International: + 612 6338 4357 CSU Internal: 84357	(Monday to Thursday 8am to 6pm; Friday 8am to 5pm) 1800 ASK CSU (1800 275 278) International +61 2 6933 7508 Internal - 37507 Fax - 6338 6599

Downloading and installing the Personal Capture software

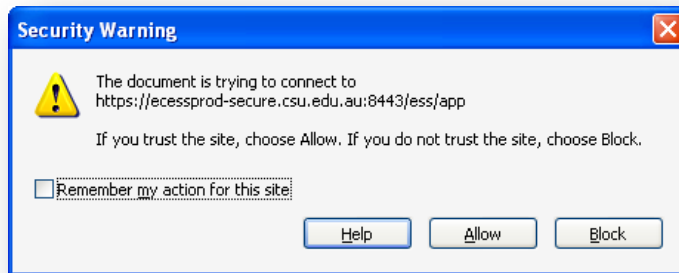
Note: You need administrator rights on your computer to install CSU Reply Personal Capture Software install

Part one: Downloading

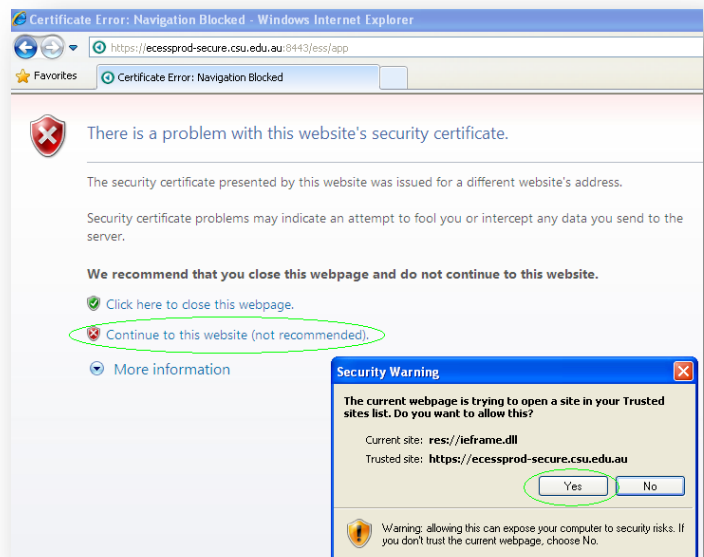
Using your Internet browser
Go to the CSU Replay Central (EchoSystem Server)

<https://ecessprod-secure.csu.edu.au:8443/ess/app>

If you are presented with the following Security Warning pop up, please select **Allow**

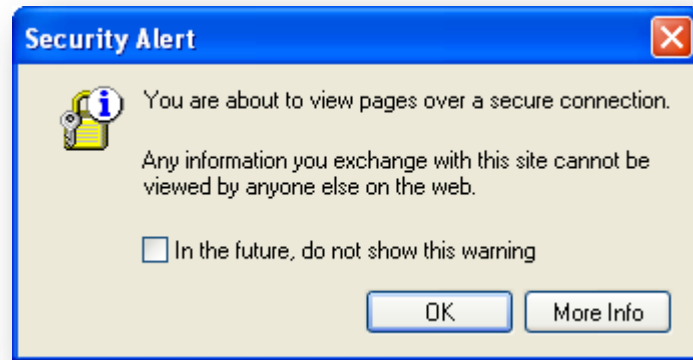


If you see the screen below, click on **Continue to this website (not recommended)** also select **Yes** to the **Security Warning**

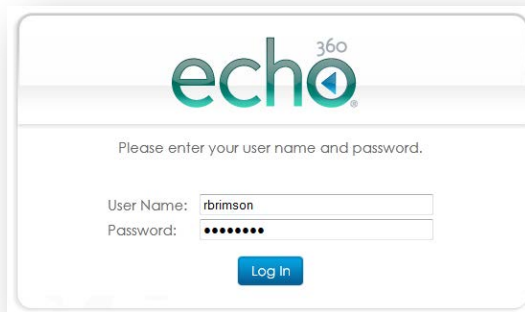


CSU Replay: Download and install Personal Capture software on Personal PC/Laptop

If you are presented with the following Security Alert pop up, please select **OK**



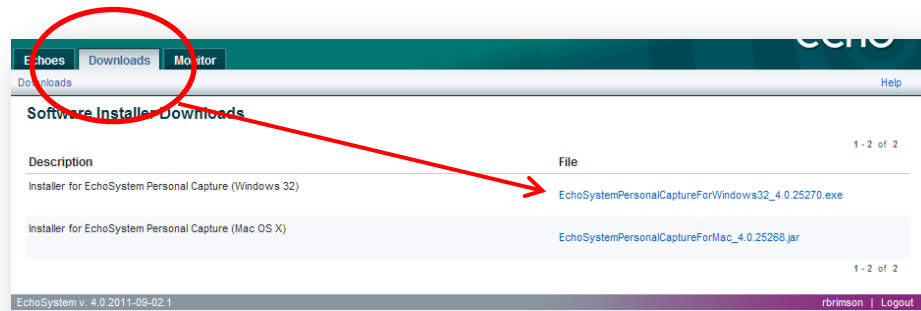
You will be presented with a "sign in" screen, see screen shot below.



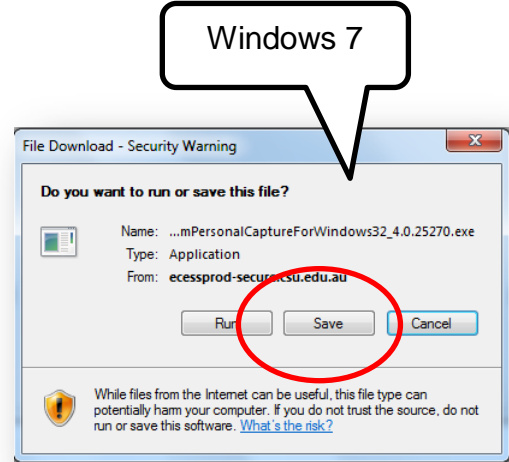
Type your current CSU user name and your password in the relevant fields to access CSU Replay Central (EchoSystem Server).

Once there you will be presented with a web page interface with three tabs. These are **Echoes**, **Downloads** and **Monitor**.

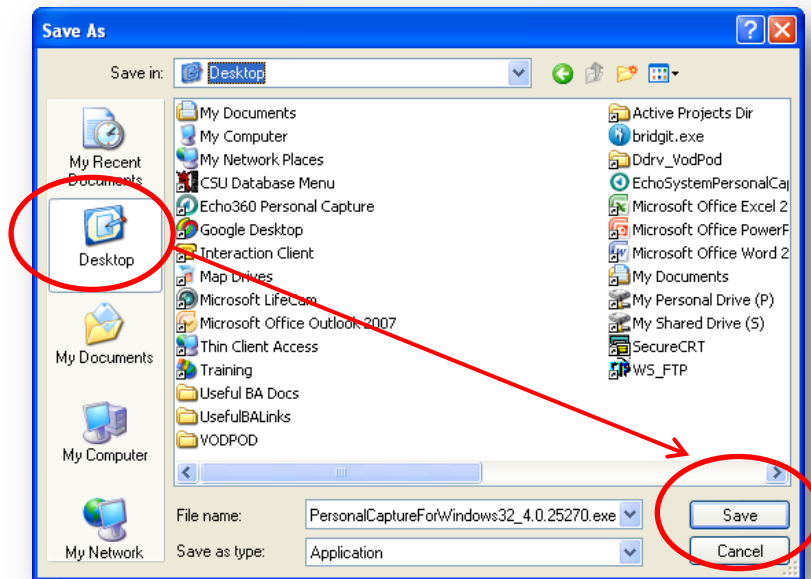
Select the **Downloads** tab, click on the correct installer for your operating system, then choose save, when the next dialog box appears



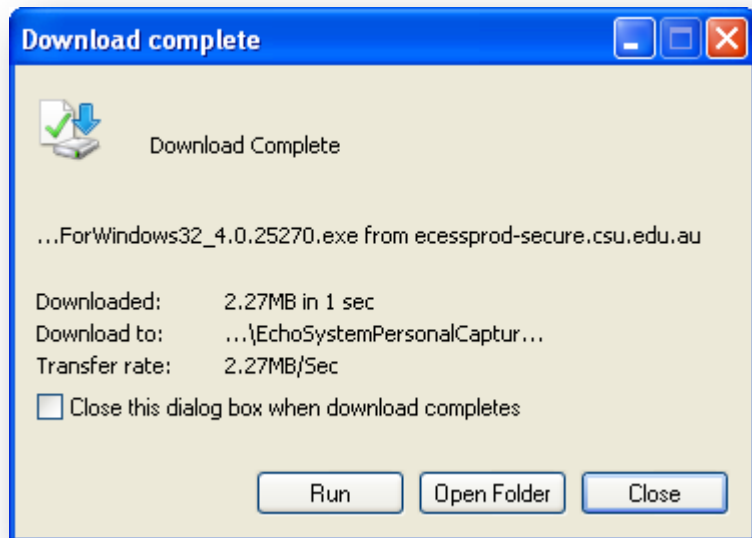
CSU Replay: Download and install Personal Capture software on Personal PC/Laptop



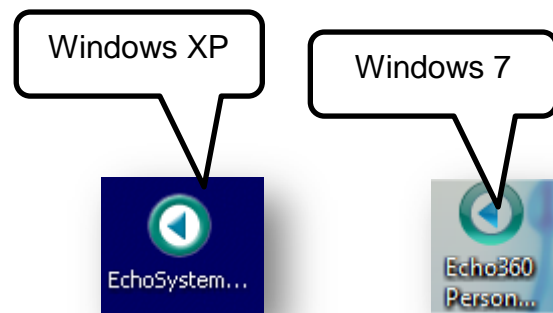
Once you have clicked on save you will see a **Save As** dialog box, select **Desktop** and click **Save**



You will then see a download complete pop up box like the one below, click **Close**.



You should see an icon like one of these



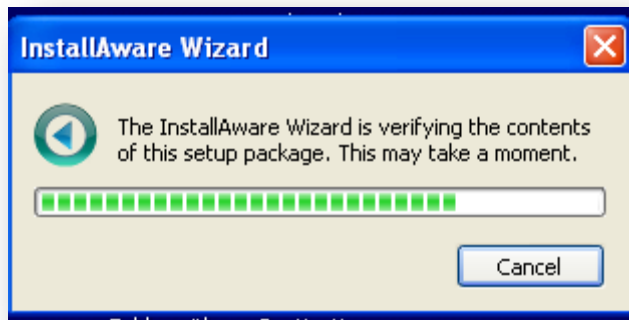
Note: You will need to delete this program **after you have performed the install** in the next few steps. To do this, select the icon and press the Delete key on your keyboard.

Part two: Installing the Personal Capture Software

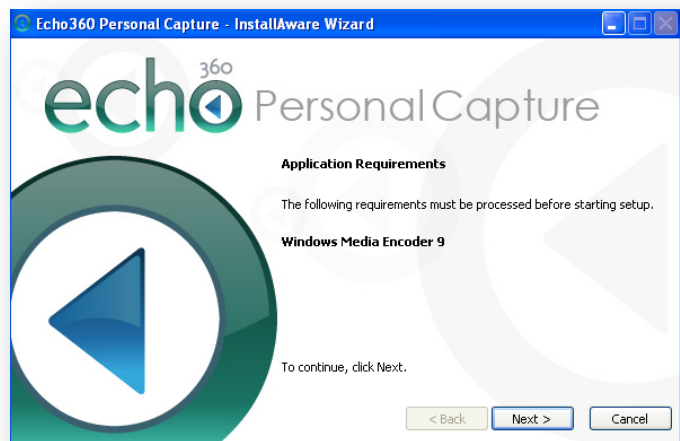
Run the Install

To run the install program, double click on the CSU Replay personal Capture installation program e.g.

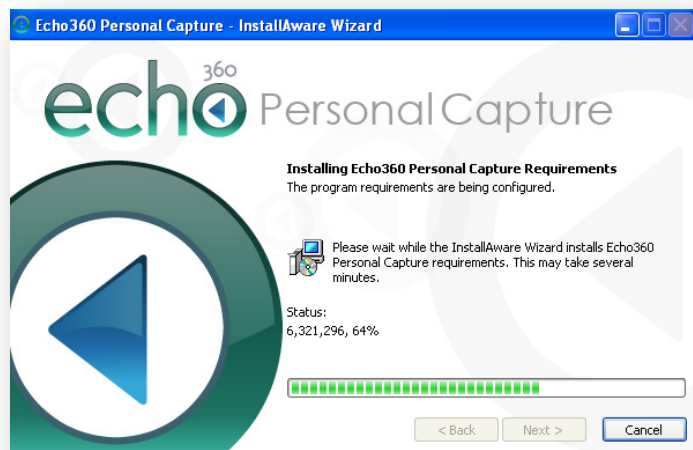
(EchoSystemPersonalCaptureForWindows32_4.0.25270.exe) icon on your desktop. You will then see a window like this one. This shows its installing.



The next window looks like this one, and it's telling you that it needs to install Windows Media Encoder 9. Choose **Next**.



Carrying on with the install



CSU Replay: Download and install Personal Capture software on Personal PC/Laptop

Installing Media Encoder



Now it's asking you where you would like to install the software. Just accept the default and press **Next**.



The next window asks you about shortcuts, accept the default and press **Next**



CSU Replay: Download and install Personal Capture software on Personal PC/Laptop

This last screen asks you if you would like to run the program now. If you do then click **Finish** otherwise uncheck the run box and then click **Finish**



Don't forget to delete the download, CSU Replay Personal Capture Installation Program icon

(e.g. EchoSystemPersonalCaptureForWindows32_4.0.25270.exe) that is on your desktop. To do this, select the icon and press the Delete key on your keyboard.