

Getting Started

To use Skype on the CSU network you will first need to have it installed, if you don't have it installed, you will need to download it.

You can download Skype from <http://www.skype.com>.

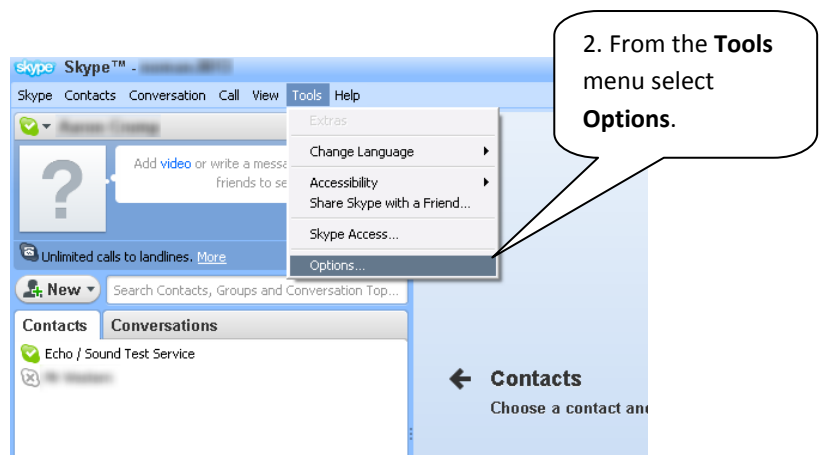
If you are installing it on a CSU Owned PC you will need Installer Rights

Requirements

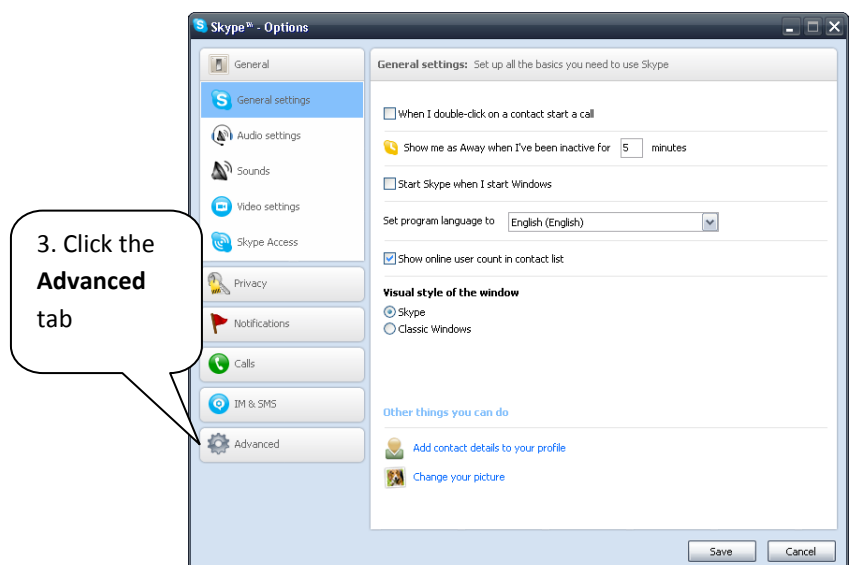
- Your CSU Username and Password
- Skype version 4.2+ installed on your computer

Configuring Skype For The CSU Network – Step By Step

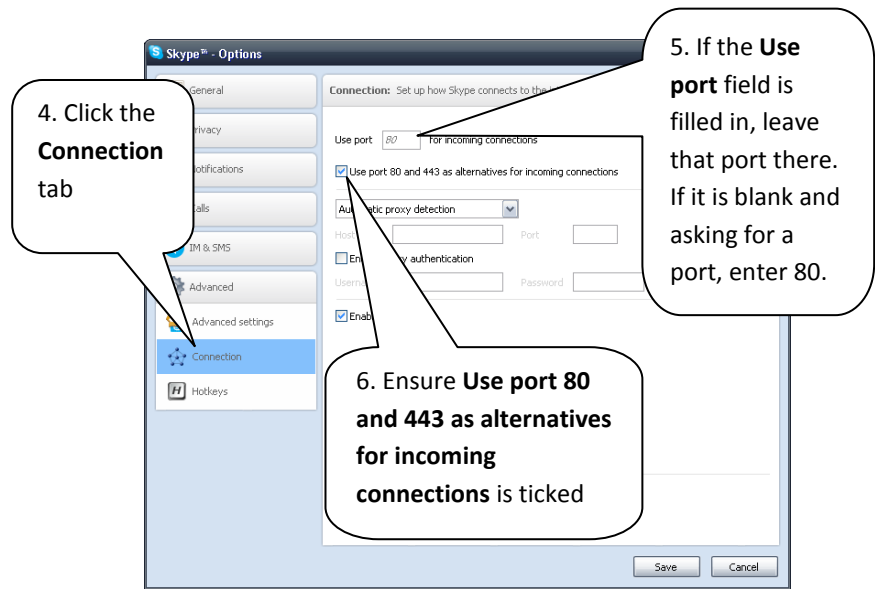
1. Open up skype
2. From the **Tools** menu select **Options**.



3. Click the **Advanced** tab from the left hand side menu



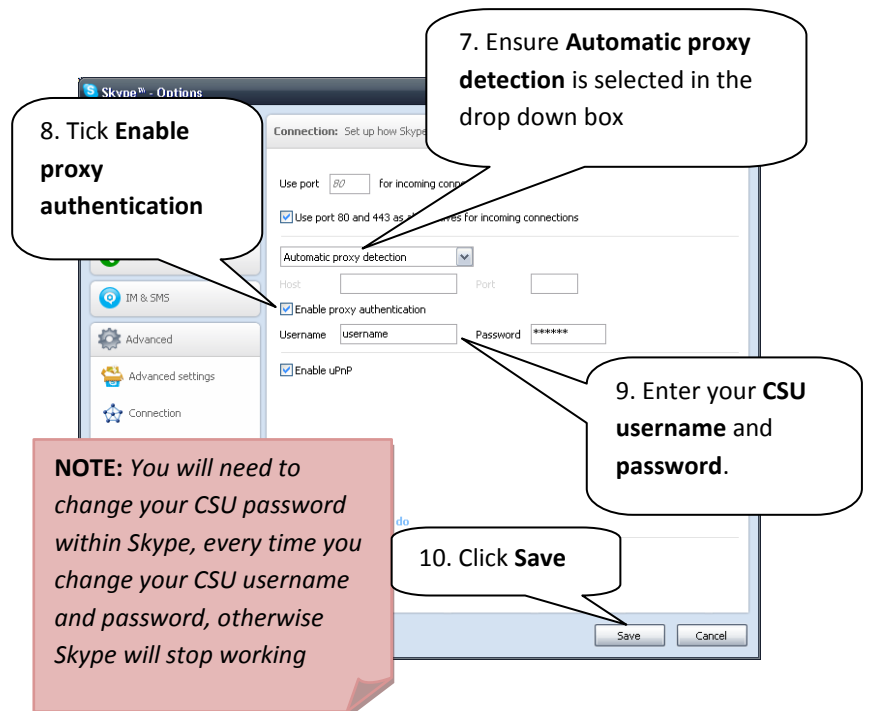
4. Click the **Connection** tab
5. If the **Use port** field is filled in, leave that port there. If it is blank and asking for a port, enter 80.
6. Ensure **Use port 80 and 443 as alternatives for incoming connections** is ticked



7. Ensure **Automatic proxy detection** is selected in the drop down box
8. Tick **Enable proxy authentication**
9. Enter your **CSU username** and **password**.

(You will need to change this everytime you change your CSU username and password, otherwise skype will stop working)

10. Click **Save**



Congratulations Skype is now configured to work through the CSU proxy
Please note, Skype is not supported by DIT, and this guide is provided for assistance only.