

Getting Started

To use Windows Live Messenger (WLM) on the CSU network you will first need to have it installed, if you don't have it installed, you will need to download it.

You can download WLM from <http://download.live.com/Messenger>.

If you are installing WLM on a CSU Owned PC you will need Installer Rights


Requirements

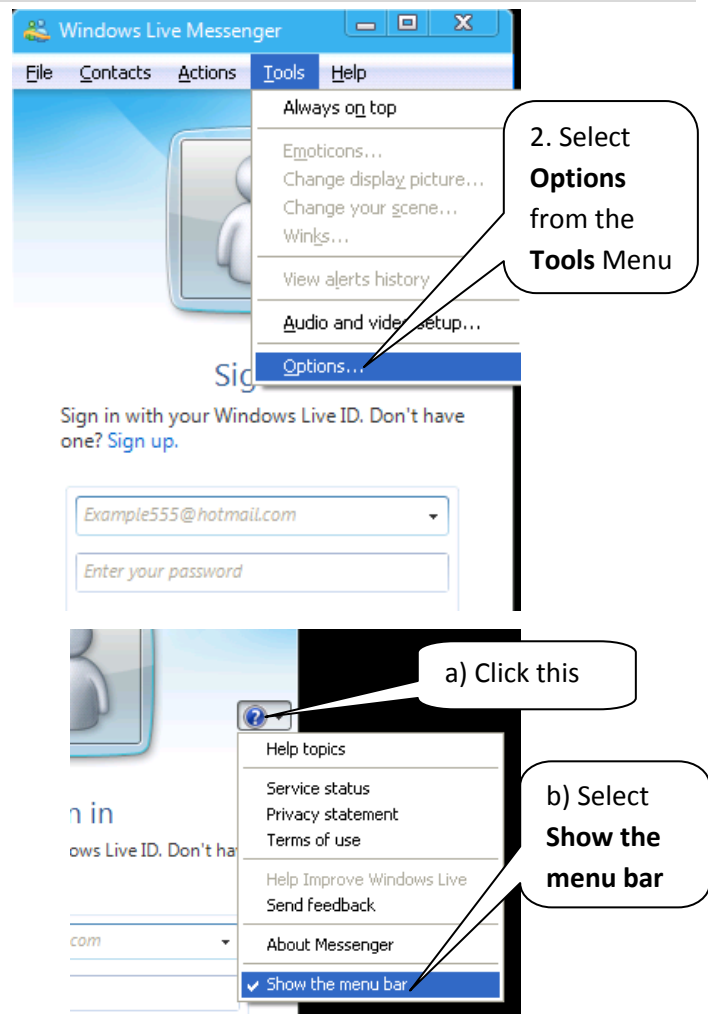
- Your CSU Username and Password
- Windows Live Messenger version 2009 and up installed on your computer
- Internet Explorer set to Automatically Detect Proxy Settings

Configuring WLM For The CSU Network – Step By Step

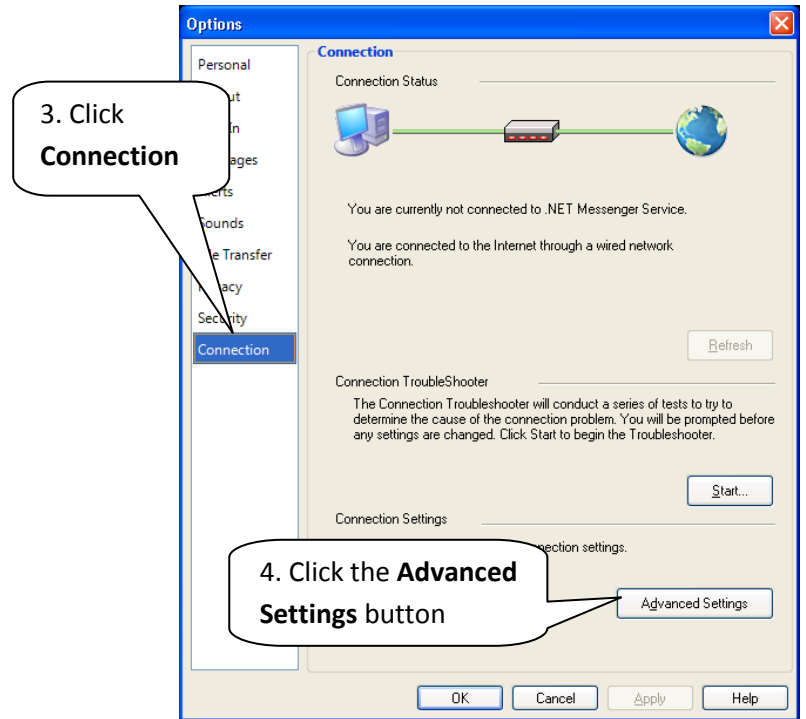
1. Open up Windows Live Messenger
2. From the **Tools** menu select **Options**.

If you do not have the menu bar across the top, you will need to follow step a) & b) below, then repeat step 2

- a) Click the  on the right
- b) Select **Show the menu bar**



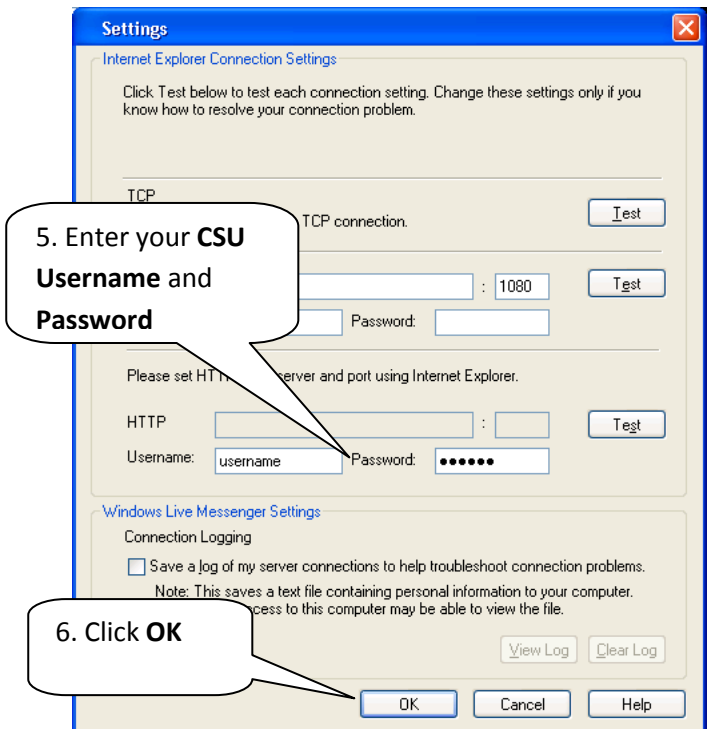
3. Click **Connection** from the left hand side menu
4. Click the **Advanced Settings** button



5. Enter your **CSU Username** and **password** into the **HTTP Proxy Username** and **Password**

(You will need to change this every time you change your CSU username and password, otherwise WLM will stop working)

6. Click **OK**, and then sign in.



Congratulations Windows Live Messenger is now configured to work through the CSU proxy
Please note, WLM is not supported by DIT, and this guide is provided for assistance only.