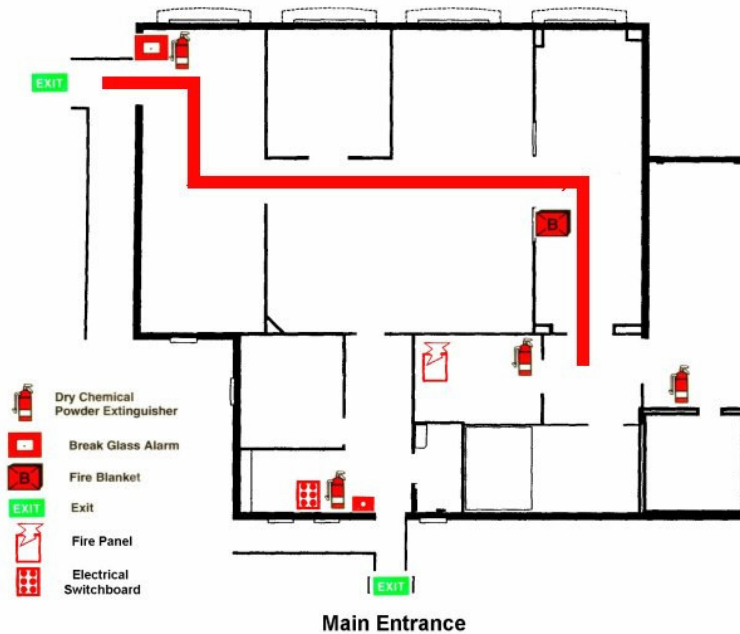


Emergency Evacuation Procedures

Map of Anatomy Lab Evacuation Routes



In the event of an emergency:

- Don't panic
- Leave quickly and quietly
- Move directly to the designated assembly point
- Don't go shopping till you have been accounted for!

Accidents

- When you get Frisky, behaviour gets Risky!

Attire

- Shoes
- Gowns
- Gloves
- Goggles

Pregnancy

- Don't attend the lab if you are in your first trimester.

Janice Hinderaker
Lecturer in Anatomy
Licence Holder & OH&S Liaison Officer