

[illegible]

CONTENTS	
Manager's Message	1
Agricultural Projects	2
Internet	2
Health Projects	3
News	3
Conferences	4
Upcoming	4

Steven Gibbs
Research Support Officer
Phone: 02 6338 4676
Email: stgibbs@csu.edu.au

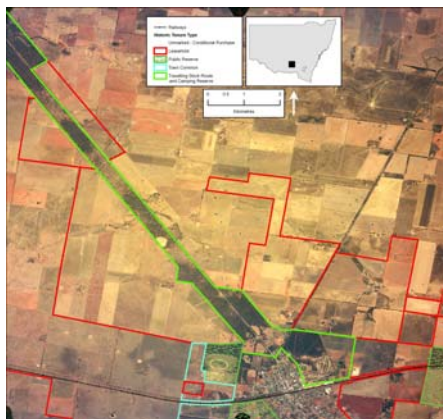
Want to know more? Visit www.csu.edu.au/research/span/

Agricultural Projects

Land-Use Policies and Landscape and Vegetation Patterns

Researcher: Sue Hughes, School of Environmental & Information Sciences

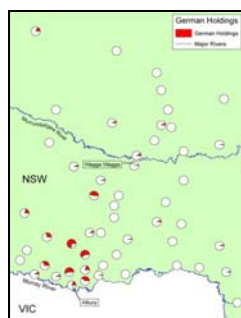
Sue's PhD describes how knowledge of historic land tenures, which were relatively 'protected' by historic legislation, may assist us to identify high quality remnants in fragmented woodlands. SPAN has supported this project by providing advice and preparing an overlay map that combines a recent air photo with an historic parish map. The illustration will assist in raising awareness of the relationship between the historic legacy of land-use policies and current vegetation patterns in fragmented woodlands.



Germans in the Southern Riverina

Researchers: Dirk HR Spennemann and Gaye Sutherland, School of Environmental & Information Sciences

As part of a multi-faceted research project into the tangible manifestation of the German presence in the Southern Riverina, Dirk HR Spennemann and Gaye Sutherland are examining the spatial patterning of German land and stock holdings at the end of the nineteenth century. This study is the first to examine the relationship between land holdings and agricultural stock holding patterns espoused by the German community. SPAN is providing mapping and analysis support.



Social Impacts of Plantation Forests

Researcher: Hugh Stewart, Institute of Land, Water and Society

SPAN is assisting Hugh Stewart with his PhD on the social impacts of plantation forests in agricultural landscapes in south-eastern Australia. The first stage of the research is using census data and GIS to understand the social changes occurring in the rural areas where the forest industry is seeking to expand plantations. When field data is collected, GIS will be an important tool to study the spatial patterns of social change in these regions, and to interpret results and implications for the plantation forestry industry.



Internet

SPAN Website Revamp

SPAN is currently revising and revamping its website to follow the standard CSU web design. The new website will also be more streamlined, allowing users to find resources and information faster.

Visit our website (www.csu.edu.au/research/span/) in the coming weeks when we activate the new design.



Free ABS Data

In December 2005 Treasurer Peter Costello announced that all Australian Bureau of Statistics (ABS) data would be available for free download to everyone. The announcement covered all ABS post-1998 publications and all spreadsheets and data cubes. AusStats, the subscription service for ABS statistics, will be discontinued as it is now no longer relevant. This announcement by the Federal Government represents a shift away from ABS's previous model of cost recovery and will improve access to important statistical data for everyone.

SPAN remains the best contact point for any or all ABS data. If you require ABS data, please contact your local SPAN representative.

Health Projects

Moving Beyond Emergency Response

Researchers: Peter O'Meara and Vianne Tourle, School of Public Health

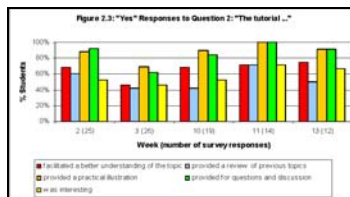
The School of Public Health conducted eight case studies in four States looking at the changing role of rural paramedics. SPAN mapped the case study locations for the project.



EMG100 Course Evaluation

Researcher: Valerie Ingham, School of Public Health

Enrolled students completed three evaluation surveys and one focus group regarding their attitudes towards their EMG100 (Introduction to Emergency Management) subject. SPAN collated this mix of quantitative and qualitative data and produced a report that documented the key themes and ideas from the data.



Clinical Placements Evaluations

Researcher: Lynette Croxon and Cathy Maginnis, School of Public Health and Health Sciences

Students enrolled in Bachelor of Nursing at the Dubbo campus are required to undertake clinical placements for subjects throughout the three years of the degree. At the conclusion of each placement, students complete an evaluation form. SPAN collated all evaluations between 2003 and 2005 and analysed the responses. The tables below show evaluation results for two subjects: NRS240 (Acute Nursing Practice 1) and NRS352 (Disability and Chronic Illness Nursing Practice). The worst scores are shown in red.

Site	No.	1. The facilitator was:					2. Facility staff were:				
		Helpful to teach	Friendly	Happy to teach	Aware of what students need	Keen to help with problems	Helpful to teach	Friendly	Keen to help with problems	Included me as part of the team	
Canberra	4	3.7	3.8	3.8	2.7	3.0	3.7	3.8	3.8	3.8	
Dubbo	14	3.4	3.3	3.3	3.2	3.6	3.4	3.4	3.6	3.4	
Nepean	14	3.8	3.9	3.9	3.1	3.3	3.5	3.4	1.9	1.9	
Overall	32	3.6	3.6	3.6	3.1	3.4	3.4	3.6	2.8	2.7	

Note: Scores less than 2.0 are marked as not relevant; scores less than 3.0 but greater than 3.0 are marked as not relevant.

Site	No.	1. Staff were:			2. Facilitator was:			3. Personally:		
		Helpful	Friendly	Keen to help in team	Available	Communicable	Professional	Keen to help in team	Communicable	Professional
Calvary	3	4.7	5.0	5.0	4.0	5.0	4.7	4.0	5.0	5.0
Concord	2	4.0	5.0	3.5	1.0	1.0	1.0	3.0	4.0	3.0
Lourdes	1	4.0	4.0	4.0	4.0	4.0	4.0	4.0	4.0	4.0
Mater	2	4.5	4.0	4.0	NA	NA	NA	4.0	5.0	2.5
Nepean	2	5.0	4.5	4.5	5.0	5.0	5.0	5.0	4.5	3.0
Royal Prince	1	4.0	4.0	5.0	3.0	4.0	5.0	5.0	4.0	2.0
Overall	11	4.5	4.5	4.4	3.3	3.8	3.8	4.2	4.5	3.3

News

ArcSDE

SPAN staff at Wagga Wagga have been busy during the last year preparing datasets for incorporation into a spatial database using ESRI's ArcSDE (see previous newsletters for background information). ArcSDE will allow users to access large volumes of SPAN datasets from their own computers without having to download the data. An initial trial database of the more commonly used datasets has been established, with a group of test users from Albury/Thurgoona, Bathurst and Wagga Wagga providing feedback to SPAN staff in order to fine tune the data delivery.

To access ArcSDE, users will need ArcGIS installed on their computer (Windows operating system only). A final rollout date has not yet been set as updated software is to be released later this year.

IAG GIS Workshop

Tuesday 29-Thursday 31 August

The Institute of Australian Geographers GIS study group will be running a three-day postgraduate workshop for supervisors, early career researchers, postgraduate and honours students in the fields of GIS, social and environmental modelling.

The venue for the workshop is Kioloa on the NSW south coast. Accommodation and food will be provided at no charge. Attendance at this event is by invitation only. Expressions of interest, which should outline your topic and state of progress, must be received by the organisers no later than 31 July 2006. Contact SPAN ASAP if you wish to attend.

Conferences

International Geographical Union Conference Monday 3 July to Friday 7 July 2006, QUT, Brisbane

Brisbane played host to the latest international geographers conference at the Queensland University of Technology. Over 900 delegates from around the world descended on Brisbane to discuss the latest research into all things geographical. SPAN's Steven Gibbs attended on behalf of CSU and provides the following summary of his experiences.

International geography conferences are complex beasts, reflecting the diversity of a discipline where issues of environment, space and place are the only centralising concern. Consequently, this IGU conference must be the only conference in Australia this year where geomorphologists, oral historians, political scientists, cultural theorists and other diverse groupings meet to discuss the challenges facing local communities, global societies and everyone in between. Hundreds of papers were given over five days.

The main session themes I attended were rural studies, GIS and remote sensing, tourism and leisure, applied geography, socio-spatial theory, modelling geographical systems, object geographies, geographies of belonging, geographical scale and a plenary session by leading GIS author Michael Goodchild titled "The Spatial Web: Visions for a Geographically Enabled World". Summaries of all the sessions can be downloaded from the conference website: <http://www.igu2006.org/>.

This column is too short to describe all the papers I heard so here are some of the more interesting ones (to me, anyway). Shahbakhti Rostami of UNSW described his GIS-based methodology to quantify rural transport disadvantage. I'm not convinced his methodology works, mainly because it fails to consider why people travel and where to, but I look forward to reading his thesis, which he has promised to send me.

Andrei Rogers of the University of Colorado described his 40 years working on population predictions in California and the mathematical formulae that he has developed during that time.

Fraser McDonald of the University of Melbourne hosted a fascinating workshop on what was described as Antipodean socio-spatial theory. A panel of six leading Australian geographers discussed the difficulties and opportunities of overcoming the perceived Anglo-American bias of international geography journals.

Shaphan Cox of Curtin University described his PhD studies into media representation, particularly the way the Western Australian media portrayed different ethnic groups during the Cronulla riots. He hopes to develop what he terms an "ethics of representation", which would be a charter developed and adhered to by journalists to ensure that ethnic groups are fairly depicted.

These four papers barely cover the diversity of this week-long talkfest. Quote of the week though is worth repeating. This is a recent quote from Bob Brown that appeared in the Canberra Times: "The Prime Minister had dinner with George W. Bush and came back convinced that same sex marriages were dangerous, but nuclear power was safe".

The IGU will convene its next international conference in Tunisia in 2008.

Upcoming

ABS Census Conference Tuesday 18-Wednesday 19 July

The Australian Bureau of Statistics is hosting a two-day conference in Canberra to showcase leading Australian research using census data and to outline some of the new initiatives that will affect the upcoming 2006 census (to be held on Tuesday 8 August).

SPAN's Gail Fuller and Steven Gibbs will be attending the conference. As users of census data and CSU's repository of all census data from recent censuses, SPAN will be attending to understand the various ways census data is used in Australian research and to learn about changes for the 2006 census. Visit www.abs.gov.au for more information.

Growing Regions Tuesday 25-Thursday 27 July

The Department of Transport and Regional Services (DOTARS) is hosting an international conference on Australia's regional economic and social development. To encourage young people to attend the event, DOTARS established 15 merit-based youth scholarships (with 'youth' generously defined as 35 years and younger). SPAN's Steven Gibbs applied for one of these scholarships and was recently informed that his application was successful. The scholarship covers travel, accommodation, meals and conference attendance. The conference will bring together leading figures in regional development from the UN, OECD, Europe and Australia, including CSU's Margaret Alston. Visit <http://www.dotars.gov.au/regional/forum/growing/index.aspx> for more information about this conference.